

Monthly Report on Short-term Transactions of Electricity in India

February, 2021



Economics Division
Central Electricity Regulatory Commission
36, Janpath, Chanderlok Building



Contents

S.No.	Contents	Page No
	Contents	i
	List of Tables and Figures	ii
	Abbreviations	iii
1	Introduction	1
2	Volume of Short-term Transactions of Electricity	1
3	Price of Short-term Transactions of Electricity	3
3.1	<i>Price of electricity transacted through Traders</i>	3
3.2	<i>Price of electricity transacted through Power Exchanges</i>	3
3.3	<i>Price of electricity transacted through DSM</i>	3
4	Trading Margin	3
5	Volume of Short-term Transactions of Electricity (Regional Entity-wise)	4
6	Congestion on Inter-State Transmission Corridor for Day-Ahead Market and Real Time Market on Power Exchanges	5
7	Volume and Price of Renewable Energy Certificates (RECs)	5
8	Inferences	6

List of Tables and Figures

S.No.	List of Tables and Figures	Page No.
I List of Tables		
Table-1	Volume of Short-term Transactions of Electricity in India	8
Table-2	Percentage Share of Electricity Transacted by Trading Licensees	10
Table-3	Price of Electricity Transacted through Traders	11
Table-4	Price of Electricity Transacted through Traders (Time-wise)	11
Table-5	Price of Electricity Transacted in Day Ahead Market through Power Exchanges	11
Table-6	Price of Electricity Transacted in Real Time Market through Power Exchanges	11
Table-7	Volume and Price of Electricity in Term Ahead Market of IEX	12
Table-8	Volume and Price of Electricity in Term Ahead Market of PXIL	12
Table-9	Volume and Price of Electricity in Green Term Ahead Market of IEX	12
Table-10	Price of Electricity Transacted through DSM	12
Table-11	Volume of Electricity Sold through Bilateral	14
Table-12	Volume of Electricity Purchased through Bilateral	15
Table-13	Volume of Electricity Sold in Day Ahead Market through Power Exchanges	16
Table-14	Volume of Electricity Purchased in Day Ahead Market through Power Exchanges	18
Table-15	Volume of Electricity Sold in Real Time Market through Power Exchanges	19
Table-16	Volume of Electricity Purchased in Real Time Market through Power Exchanges	21
Table-17	Volume of Electricity Under drawal through DSM	22
Table-18	Volume of Electricity Over drawal through DSM	25
Table-19	Total Volume of Net Short-term Transactions of Electricity (Regional Entity-wise)	28
Table-20	Details of Congestion in Power Exchanges	31
Table-21	Volume of Short-term Transactions of Electricity in India (Day-wise)	32
Table-22	Price of Electricity in Day Ahead Market and DSM (Day-wise)	33
Table-23	Price of Electricity in Real Time Market (Day-wise)	34
Table-24	Volume of Short-term Transactions of Electricity (Regional Entity-wise)	35
II List of Figures		
Figure-1	Volume of Various Kinds of Electricity Transactions in Total Electricity Generation	8
Figure-2	Volume of Short-term Transactions of Electricity	8
Figure-3	Volume transacted in different markets segments on Power Exchanges	9
Figure-4	Volume of Short-term Transactions of Electricity (Day-wise)	9
Figure-5	Percentage Share of Electricity Transacted by Trading Licensees	10
Figure-6	Price of Short-term Transactions Electricity	13
Figure-7	Price of Short-term Transactions Electricity (Day-wise)	13

Abbreviations

Abbreviation	Expanded Version
ABSP_ANTP	Acme Bhiwadi Solar Power Private Limited, Anantpur
ACBIL	ACB (India) Limited
ACP	Area Clearing Price
ACV	Area Clearing Volume
ACME_SLR	ACME Solar Power Project
ACME_RUMS	Acme Rewa Ultra Mega Solar Project
ADANI GREEN	Adani Green Energy Limited
ADY1_PVGD	Adyah Solar Energy Pvt Ltd., Block 1 Pavagada Solar Park
ADY2_PVGD	Adyah Solar Energy Pvt Ltd., Block 2 Pavagada Solar Park
ADY3_PVGD	Adyah Solar Energy Pvt Ltd., Block 3 Pavagada Solar Park
ADY6_PVGD	Adyah Solar Energy Pvt Ltd., Block 6 Pavagada Solar Park
ADY10_PVGD	Adyah Solar Energy Pvt Ltd., Block 10 Pavagada Solar Park
ADY13_PVGD	Adyah Solar Energy Pvt Ltd., Block 13 Pavagada Solar Park
AGEMPL BHUJ	Adani Green Energy (MP) Ltd., Bhuj
AHSP_ANTP	Acme Hisar Solar Power Private Limited, Anantpur
AKS_PVGD	ACME Kurukshetra Solar Energy Pvt. Ltd
AKSP_ANTP	Acme Karnal Solar Power Private Limited, Anantpur
ALFANAR_BHUJ	Alfanar Group Wind Project, Bhuj, Gujarat
AMPS Hazira	Arcelor Mittal Nippon Steel, Hazira
APTEL	Appellate Tribunal for Electricity
ARERJL_SLR	Adani Renewable Energy Park Rajasthan Ltd.
ARINSUM_RUMS	Solenergi Rewa Ultra Mega Solar Project
ARS_PVGD	ACME REWARI Solar Power Pvt Ltd.
ASEJTL_SLR	Adani Solar Energy Jodhpur Two Ltd.
AVAADA1_PVGD	Avaada Solar Energy Private Ltd., Pavagada Project 1
AVAADA2_PVGD	Avaada Solar Energy Private Ltd., Pavagada Project 2
AYANA_NPKUNTA	Ayana Power, NP Kunta
AZURE_ANTP	Azure Power, Anantpur
AZURE_PVGD	Azure Power, Pavagada
AZURE_SLR	Azure Power Solar Power Project
AZURE34_SLR	Azure Power 34 Pvt. Ltd. Solar Power Project
AZURE43_SLR	Azure Power Forty Three Private Limited
BALCO	Bharat Aluminum Company Limited
BARC	Bhabha Atomic Research Centre
BBMB	Bhakra Beas Management Board
BETAM_TCN	Betam Wind Energy Private Limited, Tuticorin
BHADRAVATHI HVDC	Bhadravathi High Voltage Direct Current Link
BRBCL	Bhartiya Rail Bijlee Company Limited
CEA	Central Electricity Authority
CERC	Central Electricity Regulatory Commission
CGPL	Coastal Gujarat Power Limited
CHUKHA HEP	Chhukha Hydroelectric Project, Bhutan
CHUZACHEN HEP	Chuzachen Hydro Electric Power Project
CLEAN_SLR	Clean Solar Power Pvt. Ltd
COASTGEN	Coastal Energen Private Limited
DAGACHU	Dagachhu Hydro Power Corporation
DAM	Day Ahead Market
DB POWER	Diligent Power Pvt. Ltd.

DCPP	Donga Mahua Captive Power Plant
DGEN MEGA POWER	DGEN Mega Power Project
DHARIWAL POWER	Dhariwal Power Station
DIKCHU HEP	Dikchu Hydro-electric Project, Sikkim
DOYANG HEP	Doyang Hydro Electric Project
DSM	Deviation Settlement Mechanism
DVC	Damodar Valley Corporation
EMCO	EMCO Energy Limited
ESSAR POWER	Essar Power Limited
ESSAR STEEL	Essar Steel Ltd
FORTUM1_PVGD	Fortum Finnsurya Energy Private Ltd, Pavagada Project 1
FORTUM2_PVGD	Fortum Finnsurya Energy Private Ltd, Pavagada Project 2
FRV_ANTP	Fotowatio Renewable Ventures, Anantapur
FRV_NPK	Fotowatio Renewable Ventures, NP Kunta
GIWEL_BHUJ	Green infra wind energy Limited, Bhuj
GIWEL_TCN	Green Infra Wind Energy Limited, Tuticorin
GMR CHHATTISGARH	GMR Chhattisgarh Energy Limited
GMR KAMALANGA	GMR Kamalanga Energy Ltd.
G-TAM	Green Term Ahead Market
HVDC ALPD	Alipurduar High Voltage Direct Current Link
HVDC CHAMPA	Champa-Kurukshetra High Voltage Direct Current Link
HVDC PUS	Pasauli High Voltage Direct Current Link
HVDC RAIGARH	Raigarh-Pugalur High Voltage Direct Current Link
IEX	Indian Energy Exchange Limited
IGSTPS	Indira Gandhi Super Thermal Power Station Jhajjar
IL&FS	Infrastructure Leasing & Financial Services Limited
INOX_BHUJ	INOX Wind Limited, Bhuj, Gujarat
J&K	Jammu & Kashmir
JAYPEE NIGRIE	Jaypee Nigrie Super Thermal Power Project
JHABUA POWER MP	Jhabua Thermal Power Project
JINDAL POWER	Jindal Power Limited
JINDAL STAGE-II	Jindal Power Ltd Stage II
JITPL	Jindal India Thermal Power Ltd.
JORETHANG	Jorethang Loop Hydroelectric Power Project
KAPP 3&4	Kakrapar Atomic Power Station Unit 3 & 4
KARCHAM WANGTOO	Karcham Wangtoo H.E. Project
KORBA WEST POWER	Korba West Power Company Limited
KOTESHWAR	Koteshwar Hydro Power project
KREDL_PVGD	Karnataka Renewable Energy Development Ltd, Pavagada
KSK MAHANADI	KSK Mahanadi Power Ltd
KSMPL_SLR	Kilaj Solar (Maharashtra) Private Limited
KURICHU HEP	Kurichhu Hydro-electric Power Station, Bhutan
LANKO_AMK	Lanco Amarkantak Power Private Limited
LANKO BUDHIL	Lanco Budhil Hydro Power Private Limited
LANKOKONDAPALLY	Lanco Kondapally Power Private Limited
LOKTAK	Loktak Power Project
MAHINDRA_RUMS	Mahindra Rewa Ultra Mega Solar Project
MAHOBASL	Mahoba Solar Power Project
MALANA	Malana Hydroelectric Plant
MANGDECHU HEP	Mangdechhu Hydroelectric Project, Mangdechhu River, Bhutan

Maruti Coal	Maruti Clean Coal and Power Limited
MB POWER	MB Power Ltd
MEENAKSHI	Meenakshi Energy Private Limited
MP	Madhya Pradesh
MTPS II	Muzaffarpur Thermal Power Station – Stage II
MYTRAH_TCEN	Mytrah Energy (India) Private Limited, Tuticorin
Mus	Million Units
NAPP	Narora Atomic Power Plant
NEEPCO	North Eastern Electric Power Corporation Limited
NEP	Nepal
NFL	National Fertilisers Limited
NHPC STATIONS	National Hydro Electric Power Corporation Ltd. Stations
NJPC	Nathpa Jhakri Hydroelectric Power Station
NLC	Neyveli Lignite Corporation Limited
NLDC	National Load Dispatch Centre
NPGC	Nabinagar Power Generating Company (Pvt.) Limited
NSPCL	NTPC - SAIL Power Company Private Limited
NTECL Vallur	NTPC Tamil Nadu Energy Company Limited Vallur
NTPC_ANTP	NTPC Anantapur
NTPC STATIONS	National Thermal Power Corporation Ltd. Stations
NTPL	NLC Tamil Nadu Power Limited
NVVN	NTPC Vidyut Vyapar Nigam Limited
ONGC Platana	ONGC Tripura Power Company
OPGC	Odisha Power Generation Corporation
ORANGE_TCEN	Orange Renewable Power Pvt. Ltd, Tuticorin
OSTRO	Ostro Energy Private Limited
OTC	Over The Counter
PARAM_PVGD	Parampujya Solar Energy Private Ltd
PARE HEP	Pare hydroelectric project, Arunachal Pradesh
PX	Power Exchange
PXIL	Power Exchange India Limited
RAIL	Indian Railways
RAMPUR HEP	Rampur Hydro Electric Power Project
RANGIT HEP	Rangit Hydroelectric power project
RANGANADI HEP	Ranganadi Hydro Electric Power Project, Arunachal Pradesh
RAP-B	Rajasthan Atomic Power Plant-B
RAP-C	Rajasthan Atomic Power Plant-C
REC	Renewable Energy Certificate
REGL	Raigarh Energy Generation Limited
RENEW_BHACHAU	ReNew Power Limited, Bhachau
RENEW_BHUJ	ReNew Power Limited, Bhuj
RENEW_PVGD	ReNew Wind Energy (TN2) Private Limited
RENEW_SLR	Renew Solar
RENEW_SLR_BKN	Renew Solar Bikaner
RGPPL_IR	Ratnagiri Gas and Power Private Ltd., supply to Indian Railways
RGPPL_OTHER	Ratnagiri Gas and Power Private Limited
RLDC	Regional Load Dispatch Centre
RPREL	Raipur Energen Limited
RTC	Round The Clock
RTM	Real Time Market

Sasan UMPP	Sasan Ultra Mega Power Project
SB_SLR	Soft Bank Solar
SBG CLEANTECH_SLR	SBG Cleantech Ltd
SBG_NPK	SB Energy Solar Private Limited, NP Kunta
SBG_PVGD	SB Energy Solar Private Limited, Pavagada
SEMBCORP	Sembcorp Gayatri Power Ltd
SHREE CEMENT	Shree Cement Limited
SIMHAPURI	Simhapuri Energy Private Limited
SKS Power	SKS Power Generation Chhattisgarh Limited
SINGOLI BHATWARI HEP	Singoli-Bhatwari Hydroelectric Project, Uttarakhand
SPECTRUM	Spectrum Power Generation Ltd
SPRNG_NPKUNTA	Sprng Energy, NP Kunta
TALA HEP	Tala Hydroelectric Project, Bhutan
TASHIDENG HEP	Tashiding Hydro Electric Project, Sikkim
TATA_ANTP	TATA Power Anantapur
TATA_PVGD	Tata Power Renewable Energy Ltd
TATA_SLR	Tata Solar
TEESTA STG3	Teesta Stage 3 Hydro Power Project
TEHRI	Tehri Hydro Electric Power Project
TAM	Term Ahead Market
THERMAL POWERTECH	Thermal Powertech Corporation India Limited
URI-II	Uri-II Hydropower Project
VINDHYACHAL HVDC	Vindhyachal High Voltage Direct Current Link
YARROW_PVGD	Yarrow Infra Structure Private Ltd

1.Introduction

1.1. A well-functioning electricity market requires an effective market monitoring process. As part of the market monitoring process, the monthly report on short-term transactions of electricity, is being prepared and posted on the website of CERC since August 2008. Here, “short-term transactions of electricity” refers to the contracts of less than one year period, for electricity transacted (inter-State) through inter-State Trading Licensees and directly by the Distribution Licensees, Power Exchanges (Indian Energy Exchange Ltd (IEX) and Power Exchange India Ltd (PXIL), and Deviation Settlement Mechanism (DSM). The objectives of the report are: (i) to observe the trends in volume and price of the short-term transactions of electricity; (ii) to analyse competition among the market players; (iii) to analyse effect of congestion on volume of electricity transacted through power exchanges; (iv) to provide information on volume and price of Renewable Energy Certificates (RECs) transacted through power exchanges; and (v) to disclose/disseminate all relevant market information. The details of the report for the month of **February, 2021** are as under:

2. Volume of Short-term Transactions of Electricity

2.1. During February 2021, total electricity generation excluding generation from renewable and captive power plants in India was 101057.43 MUs (Table-1). Of the total electricity generation, 12.82% was transacted through short-term, comprising of 6.16% through Day Ahead Market (DAM) and Real Time Market (RTM) of power exchanges, followed by 4.99% through bilateral (through traders and term-ahead contracts on power exchanges and directly between distribution companies) and 1.66% through DSM (Table-1 & Figure-1).

2.2. Of the total short-term transactions (12952.40 MUs), the electricity transacted in DAM and RTM of power exchanges constitutes 48.07%, followed by 38.96% through bilateral (27.29% through traders and term-ahead contracts on power exchanges and 11.67% directly between distribution companies) and 12.98% through DSM (Table-1 & Figure-2). Daily volume of short-term transactions is shown in Table-21 & Figure-4.

2.3. Of the total volume of electricity transacted through power exchanges, 70.62% of the volume was transacted in DAM, followed by 15.47% in RTM and 13.91% in Term Ahead Market (TAM) (including G-TAM) (Figure-3).

2.4. The percentage share of electricity traded by each trading licensee in the total volume of electricity traded by all the trading licensees is provided in Table-2 & Figure-5. The volume of electricity transacted by the trading licensees includes bilateral transactions and the transactions undertaken through power exchanges. There were 33 trading licensees as on February 2021. In February 2021, 23 trading licensees were engaged in short term trading. Top 5 trading licensees had a share of 79.39% in the total volume traded by all the licensees. These are PTC India Ltd., Tata Power Trading Company (P) Ltd., GMR Energy Trading Ltd., Adani Enterprises Ltd. and NTPC Vidyut Vyapar Nigam Ltd.

2.5. Herfindahl-Hirschman Index (HHI) has been used for measuring the competition among the trading licensees. Increase in the HHI generally indicates decrease in competition and increase of market concentration, and vice versa. The HHI below 0.15 indicates non-concentration, HHI between 0.15 and 0.25 indicates moderate concentration and HHI above 0.25 indicates high concentration. The HHI has been computed based on the volume of electricity traded (inter-State & intra-State) by inter-State trading licensees, and it was 0.1911 for the month of February 2021, which indicates moderate concentration of market power (Table-2).

2.6. The volume of electricity transacted in the DAM of IEX and PXIL was 5099.75 MUs and 7.44 MUs respectively. The volume of total buy bids and sell bids was 6413.70 MUs and 8534.92 MUs respectively in IEX, while the same was 32.73 MUs and 93.62 MUs respectively in PXIL.

2.7. The volume of electricity transacted in the RTM of IEX was 1118.45 MUs. No electricity was transacted in the RTM of PXIL. The volume of total buy bids and sell bids was 1431.35 MUs and 2496.93 MUs respectively in IEX, while there were no bids in PXIL. The variation in the volume of buy bids and sell bids placed through power exchanges shows variation in the demand and supply position.

2.8. The volume of electricity transacted in the TAM of IEX and PXIL was 432.24 MUs and 480.38 MUs respectively (Table-7 & Table-8). The volume of electricity transacted in the Green Term Ahead Market (G-TAM) of IEX was 93.29 MUs (Table-9).

3. Price of Short-term Transactions of Electricity

3.1. **Price of electricity transacted through Traders:** The minimum, maximum and weighted average sale prices have been computed for the electricity transacted through traders and the sale prices were ₹2.44/kWh, ₹4.70/kWh and ₹3.09/kWh respectively (Table-3). The weighted average sale prices were also computed for the electricity transacted during Round the Clock (RTC), Peak and Off-peak periods separately, and the sale prices were ₹3.11/kWh, ₹3.73/kWh and ₹3.01/kWh respectively (Table-4).

3.2. **Price of electricity transacted through Power Exchanges:** The minimum, maximum and weighted average prices for the electricity transacted in the DAM of IEX were ₹1.58/kWh, ₹8.75/kWh and ₹3.56/kWh respectively. These prices in the DAM of PXIL were ₹2.58/kWh, ₹13.95/kWh and ₹3.73/kWh respectively (Table-5). The minimum, maximum and weighted average prices for the electricity transacted in the RTM of IEX were ₹1.58/kWh, ₹9.00/kWh and ₹3.50/kWh respectively (Table-6). The price of electricity transacted in the TAM of IEX and PXIL was ₹2.91/kWh and ₹3.23/kWh respectively (Table-7 and Table-8). The price of electricity transacted in the G-TAM of IEX was ₹4.61/kWh (Table-9).

3.3. **Price of electricity transacted through DSM:** The minimum, maximum and average price of DSM was ₹0.00/kWh and ₹8.00/kWh ₹3.42/kWh respectively (Table-10).

3.4. The prices of electricity transacted through trading licensees, power exchanges and DSM and their comparison is shown in Table-22 & 23, Figure-6&7.

4. Trading Margin

4.1. As per the CERC (Procedure, Terms and Conditions for grant of trading licence and other related matters) Regulations 2020, the trading licensees are allowed to charge trading margin of not less than 0 paise/kWh and upto 7 paise/kWh. The weighted average trading

margin charged by the trading licensees for bilateral transactions during the month was
`0.023/kWh.

5. Volume of Short-term Transactions of Electricity (Regional Entity¹-Wise)

5.1. Of the total bilateral transactions, top 5 regional entities sold 41.95% of the volume, and these were Punjab, Sembcorp Gayatri Power Ltd., Uttar Pradesh, Gujarat and Delhi. Top 5 regional entities purchased 57.40% of the volume, and these were Madhya Pradesh, Tamil Nadu, Telangana, Rajasthan and Himachal Pradesh (Table-11&12).

5.2. Of the total DAM transactions of power exchanges, top 5 regional entities sold 47.23% of the volume, and these were Uttar Pradesh, West Bengal, Odisha, Jindal India Thermal Power Ltd. and Bihar. Top 5 regional entities purchased 67.01% of the volume, and these were Gujarat, Telangana, Andhra Pradesh, Tamil Nadu and Jammu & Kashmir (Table-13 & 14).

5.3. Of the total RTM transactions of power exchanges, top 5 regional entities sold 44.69% of the volume, and these were Uttar Pradesh, Odisha, West Bengal, Madhya Pradesh and Damodar Valley Corporation. Top 5 regional entities purchased 73.20% of the volume, and these were Jammu & Kashmir, Telangana, Rajasthan, Gujarat and Andhra Pradesh (Table-15 & 16).

5.4. Of the total DSM transactions, top 5 regional entities under drew 27.59% of the volume, and these were NTPC Stations (Western Region), Kakrapar Atomic Power Station Unit 3 & 4, Karnataka, NHPC Stations and Madhya Pradesh (Table-17). Top 5 regional entities overdrew 20.85% of the volume, and these were Rajasthan, NTPC Stations (Northern Region), Uttar Pradesh, Gujarat and NTPC Stations (Eastern Region) (Table-18).

5.5. The total volume of net short-term transactions of electricity (Regional entity-wise) i.e. volume of net transactions through bilateral, power exchanges and DSM is shown in Table-19 & 24. Top 5 electricity selling regional entities were Uttar Pradesh, Sembcorp Gayatri Power Ltd., Odisha, Jindal India Thermal Power Ltd. and Diligent Power Pvt. Ltd. Top 5 electricity purchasing regional entities were Telangana, Tamil Nadu, Gujarat, Rajasthan and Jammu & Kashmir.

¹ In case of a state, the entities which are "selling" also include generators connected to state grid and the entities which are "buying" also include open access consumers.

6. Congestion² on Inter-State Transmission Corridor for Day-Ahead Market and Real Time Market on Power Exchanges

6.1. The power exchanges use a price discovery mechanism in which the aggregate demand and supply are matched to arrive at an unconstrained market price and volume. This step assumes that there is no congestion in the inter-State transmission system between different regions. However, in reality, the system operator (NLDC) in coordination with RLDCs limits the flow (due to congestion) in the inter-State transmission system. In such a situation, power exchanges adopt a mechanism called “Market Splitting”³.

6.2. In the month of February 2021, congestion occurred in RTM of IEX only. There was no congestion on PXIL. The details of congestion are shown in Table-20. The volume of electricity that could not be cleared due to congestion & other reasons and could not be transacted through power exchanges is the difference between unconstrained cleared volume and actual cleared volume.

6.3. During the month, the volume of electricity that could not be cleared in RTM on IEX was 0.05% of the unconstrained cleared volume. In terms of time, congestion occurred was 1.34% in the RTM on IEX (Table-19).

7. Volume and Price of Renewable Energy Certificates (RECs)

7.1. The concept of Renewable Energy Certificates (RECs) seeks to address mismatch between availability of renewable energy and the requirement of the obligated entities to meet their renewable purchase obligation by purchasing green attributes of renewable energy

² “Congestion” means a situation where the demand for transmission capacity exceeds the available transfer capability

³ “Market Splitting” is a mechanism adopted by Power Exchange where the market is split in the event of transmission congestion, into predetermined (by NLDC) bid areas or zones, which are cleared individually at their respective area prices such that the energy balance in every bid area is reached based upon the demand and supply in individual bid areas and using the available transmission corridor capacity between various bid areas simultaneously”
As a result of this market splitting the price of electricity in the importing region, where demand for electricity is more than supply, becomes relatively higher than the price of electricity in the exporting region.

remotely located in the form of RECs. The REC mechanism is a market based instrument, to promote renewable sources of energy and development of electricity market.

7.2. One REC is equivalent to 1 MWh electricity injected into the grid from renewable energy sources. The REC is exchanged only in the power exchanges approved by CERC within the band of a floor price and forbearance (ceiling) price as notified by CERC from time to time. The first REC trading was held on power exchanges in May, 2011.

7.3. There were no transactions of REC in the month of February 2021 as the scheduled trading was postponed by Hon'ble APTEL in matter of the CERC order fixing new floor and forbearance price for both Solar and Non-solar RECs.

8. Inferences:

- (1) The percentage of short-term transactions of electricity to total electricity generation was 12.82%.
- (2) Of the total short-term transactions, the electricity transacted in DAM and RTM of power exchanges constitutes 48.07%, followed by 38.96% through bilateral (27.29% through traders and term-ahead contracts on power exchanges and 11.67% directly between distribution companies) and 12.98% through DSM
- (3) Of the total volume of electricity transacted through power exchanges, 70.62% of the volume was transacted in DAM, followed by 15.47% in RTM and 13.91% in TAM (including G-TAM).
- (4) Top 5 trading licensees had a share of 79.39% in the total volume traded by all the trading licensees.
- (5) The Herfindahl Hirschman Index computed for the volume of electricity traded by trading licensees was 0.1911, indicating moderate concentration of market power.
- (6) The weighted average price of electricity transacted through trading licensees was ₹3.09/kWh.

- (7) The weighted average price of electricity transacted in the TAM of IEX and PXIL was ₹2.91/kWh and ₹3.23/kWh respectively. The weighted average price of electricity transacted in the G-TAM of IEX was ₹4.61/kWh.
- (8) The weighted average price of electricity transacted in DAM of IEX and PXIL was ₹3.56/kWh and ₹3.73/kWh. The weighted average price of electricity transacted in RTM of IEX was ₹3.50/kWh. No electricity was transacted in the RTM of PXIL.
- (9) The average price of electricity transacted through DSM was ₹3.42/kWh.
- (10) The weighted average trading margin charged by the trading licensees for bilateral transactions was ₹0.023/kWh. The trading margin charged during the month was in line with the Trading Margin Regulations 2020.
- (11) Top 5 electricity selling regional entities were Uttar Pradesh, Sembcorp Gayatri Power Ltd., Odisha, Jindal India Thermal Power Ltd. and Diligent Power Pvt. Ltd. Top 5 electricity purchasing regional entities were Telangana, Tamil Nadu, Gujarat, Rajasthan and Jammu & Kashmir.
- (12) In the month of February 2021, congestion occurred in RTM of IEX only. During the month, the volume of electricity that could not be cleared in RTM on IEX was 0.05% of the unconstrained cleared volume. In terms of time, congestion occurred was 1.34% in the RTM on IEX.
- (13) There were no transactions of REC on both the power exchanges in the month of February 2021, as the scheduled REC trading sessions were postponed by the order of Hon'ble APTEL.

Table-1: VOLUME OF SHORT-TERM TRANSACTIONS OF ELECTRICITY (ALL INDIA), FEBRUARY 2021				
Sr. No	Short-term transactions	Volume (MUs)	% to Volume of short-term transactions	% to Total Generation
1	Bilateral	5045.91	38.96	4.99
	(i) Through Traders and PXs	3534.47	27.29	3.50
	(ii) Direct	1511.44	11.67	1.50
2	Through Power Exchanges	6225.65	48.07	6.16
	(i) IEX			
	(a) DAM	5099.75	39.37	5.05
	(b) RTM	1118.45	8.64	1.11
	(ii)PXIL			
	(a) DAM	7.44	0.06	0.01
	(b) RTM	0.00	0.00	0.00
3	Through DSM	1680.84	12.98	1.66
	Total	12952.40	-	12.82
	Total Generation	101057.43	-	-

Source: NLDC

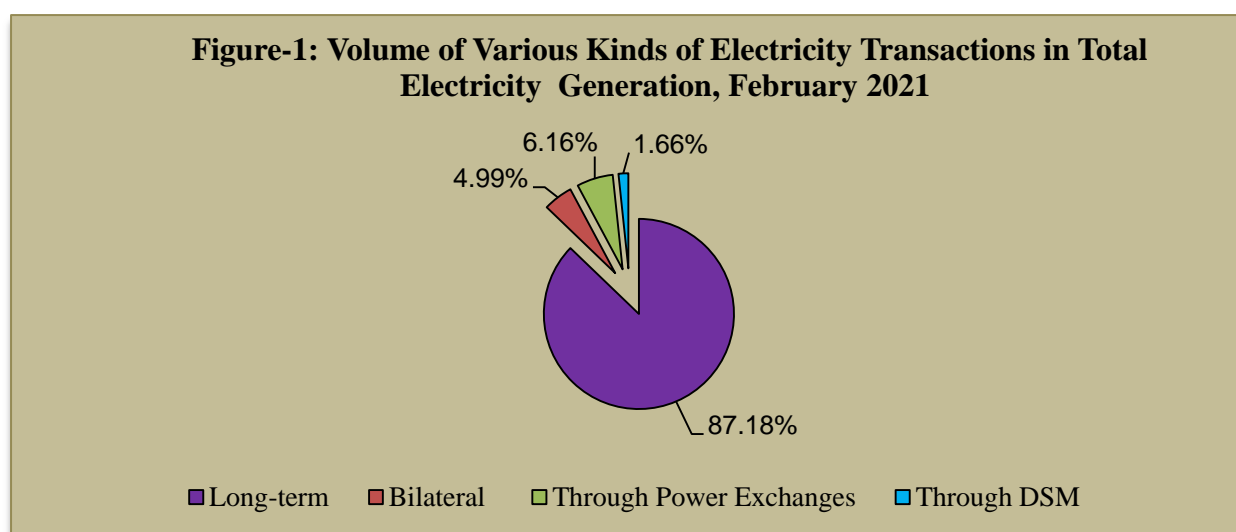


Figure-2: Volume of Short-term Transactions of Electricity, February 2021

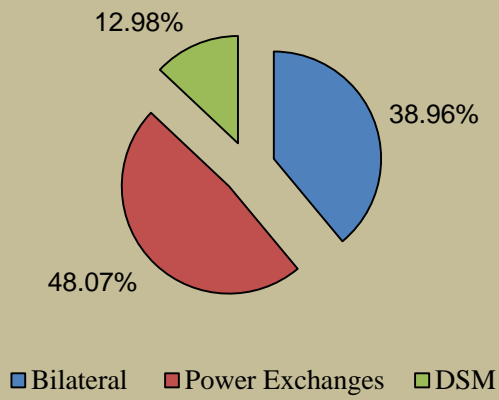


Figure-3: Volume transacted in different markets segments on Power Exchanges, February 2021

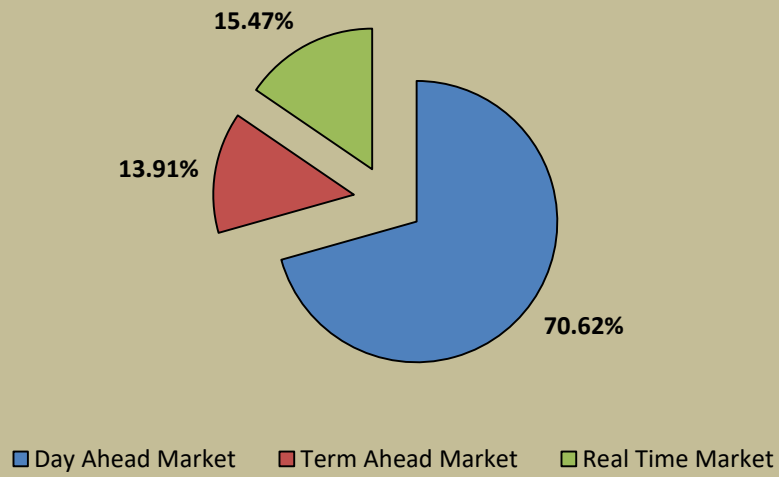


Figure-4: Volume of Short-term Transactions of Electricity, February 2021 (Day-wise)

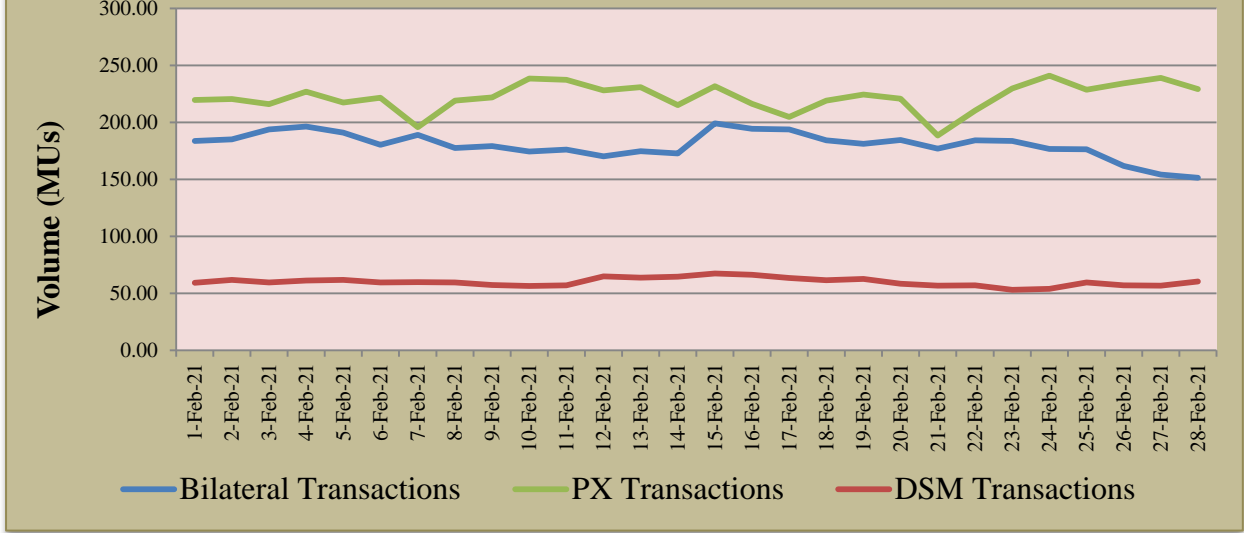


Table-2: PERCENTAGE SHARE OF ELECTRICITY TRANSACTED BY TRADING LICENSEES, FEBRUARY 2021			
Sr.No	Name of the Trading Licensee	% Share in total Volume transacted by Trading Licensees	Herfindahl-Hirschman Index
1	PTC India Ltd.	37.10	0.1376
2	Tata Power Trading Company (P) Ltd.	12.73	0.0162
3	GMR Energy Trading Ltd.	11.84	0.0140
4	Adani Enterprises Ltd.	9.11	0.0083
5	NTPC Vidyut Vyapar Nigam Ltd.	8.60	0.0074
6	Manikaran Power Ltd.	6.51	0.0042
7	Arunachal Pradesh Power Corporation (P) Ltd.	4.40	0.0019
8	Kreate Energy (I) Pvt. Ltd.	2.58	0.0007
9	National Energy Trading & Services Ltd.	1.76	0.0003
10	JSW Power Trading Company Ltd	0.87	0.0001
11	Essar Electric Power Development Corp. Ltd.	0.85	0.0001
12	Knowledge Infrastructure Systems (P) Ltd	0.74	0.0001
13	RPG Power Trading Company Ltd.	0.59	0.0000
14	Instinct Infra & Power Ltd.	0.56	0.0000
15	Refex Energy Limited	0.38	0.0000
16	NLC India Ltd.	0.37	0.0000
17	Statkraft Markets Pvt. Ltd.	0.28	0.0000
18	Ambitious Power Trading Company Ltd.	0.23	0.0000
19	Abja Power Private Limited	0.18	0.0000
20	Gita Power & Infrastructure Private Limited	0.17	0.0000
21	Shree Cement Ltd.	0.08	0.0000
22	Customized Energy Solutions India (P) Ltd.	0.02	0.0000
23	Phillip Commodities India (P) Ltd.	0.02	0.0000
TOTAL		100.00%	0.1911
Top 5 trading licensees		79.39%	
<i>Note 1: Volume of electricity transacted by the trading licensees includes bilateral transactions (inter-state & intra-state) and the transactions undertaken through power exchanges.</i>			
<i>Note 2: Volume of electricity transacted by Global Energy Ltd is not included.</i>			
<i>Source: Information submitted by trading licensees</i>			

Figure 5: Percentage Share of Electricity Transacted by Trading Licensees, February 2021

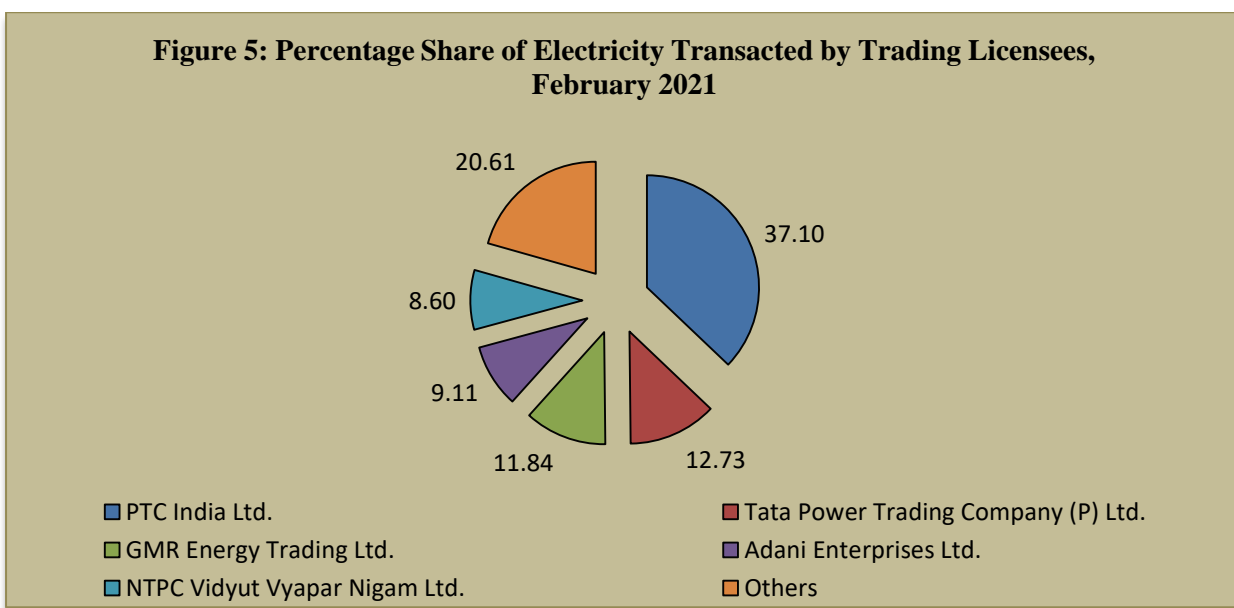


Table-3: PRICE OF ELECTRICITY TRANSACTED THROUGH TRADERS, FEBRUARY 2021		
Sr.No	Item	Sale Price of Traders (₹/kWh)
1	Minimum	2.44
2	Maximum	4.70
3	Weighted Average	3.09

Source: Information submitted by trading licensees

Table-4: PRICE OF ELECTRICITY TRANSACTED THROUGH TRADERS (TIME-WISE), FEBRUARY 2021		
Sr.No	Period of Trade	Sale Price of Traders (₹/kWh)
1	RTC	3.11
2	PEAK	3.73
3	OFF PEAK	3.01

Source: Information submitted by trading licensees

Table-5: PRICE OF ELECTRICITY TRANSACTED IN DAY AHEAD MARKET THROUGH POWER EXCHANGES, FEBRUARY 2021			
Sr.No	ACP	Price in IEX (₹/kWh)	Price in PXIL (₹/kWh)
1	Minimum	1.58	2.58
2	Maximum	8.75	13.95
3	Weighted Average	3.56	3.73

Source: Information submitted by IEX and PXIL

Table-6: PRICE OF ELECTRICITY TRANSACTED IN REAL TIME MARKET THROUGH POWER EXCHANGES, FEBRUARY 2021			
Sr.No	ACP	Price in IEX (₹/kWh)	Price in PXIL (₹/kWh)
1	Minimum	1.58	-
2	Maximum	9.00	-
3	Weighted Average	3.50	-

Source: Information submitted by IEX and PXIL

Table-7: VOLUME AND PRICE OF ELECTRICITY IN TERM AHEAD MARKET OF IEX, FEBRUARY 2021			
Sr.No	Term ahead contracts	Actual Scheduled Volume (MUs)	Weighted Average Price (₹/kWh)
1	Intra-Day Contracts	1.31	3.31
2	Day Ahead Contingency Contracts	58.26	2.79
3	Daily Contracts	372.67	2.93
	Total	432.24	2.91

Source: IEX

Table-8: VOLUME AND PRICE OF ELECTRICITY IN TERM AHEAD MARKET OF PXIL, FEBRUARY 2021			
Sr.No	Term ahead contracts	Actual Scheduled Volume (MUs)	Weighted Average Price (₹/kWh)
1	Intra-Day Contracts	14.55	3.76
2	Any Day(s) Contracts	465.83	3.21
	Total	480.38	3.23

Source: PXIL

Table-9: VOLUME AND PRICE OF ELECTRICITY IN GREEN TERM AHEAD MARKET OF IEX, FEBRUARY 2021			
Sr.No	Green Term ahead contracts	Actual Scheduled Volume (MUs)	Weighted Average Price (₹/kWh)
1	Intra-Day Contracts	1.717	4.18
2	Day Ahead Contingency Contracts	91.03	4.62
3	Daily Contracts	0.54	4.37
	Total	93.29	4.61

Source: IEX

Table-10: PRICE OF ELECTRICITY TRANSACTED THROUGH DSM, FEBRUARY 2021		
Sr.No	Item	Price in All India Grid (₹/kWh)
1	Minimum	0.00
2	Maximum	8.00
3	Average	3.42

Source: NLDC

Figure-6: Price of Short-term Transactions of Electricity, February 2021

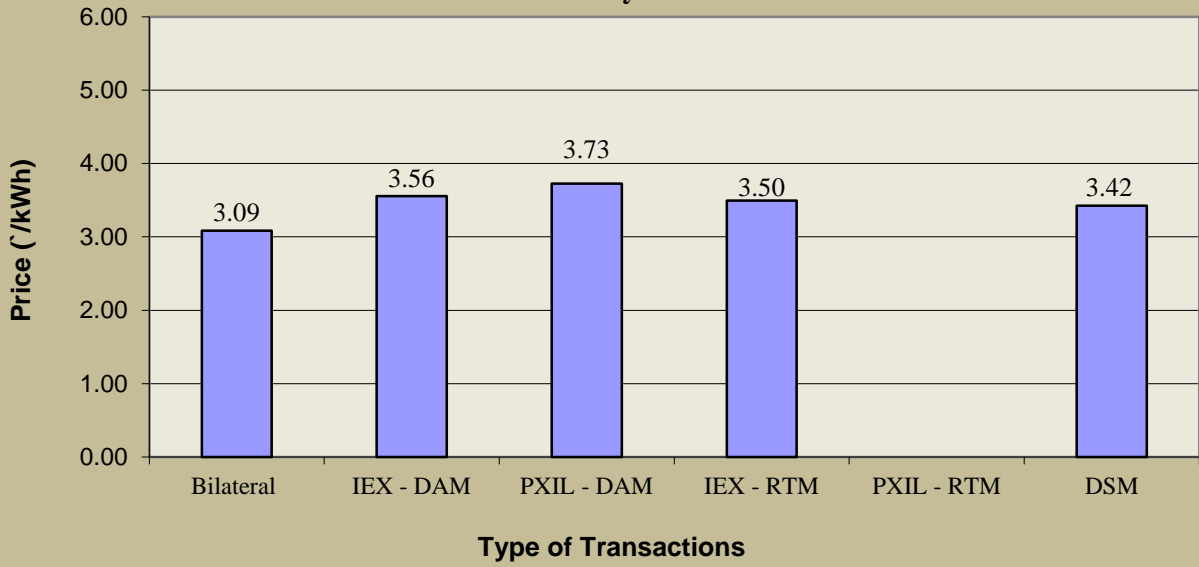
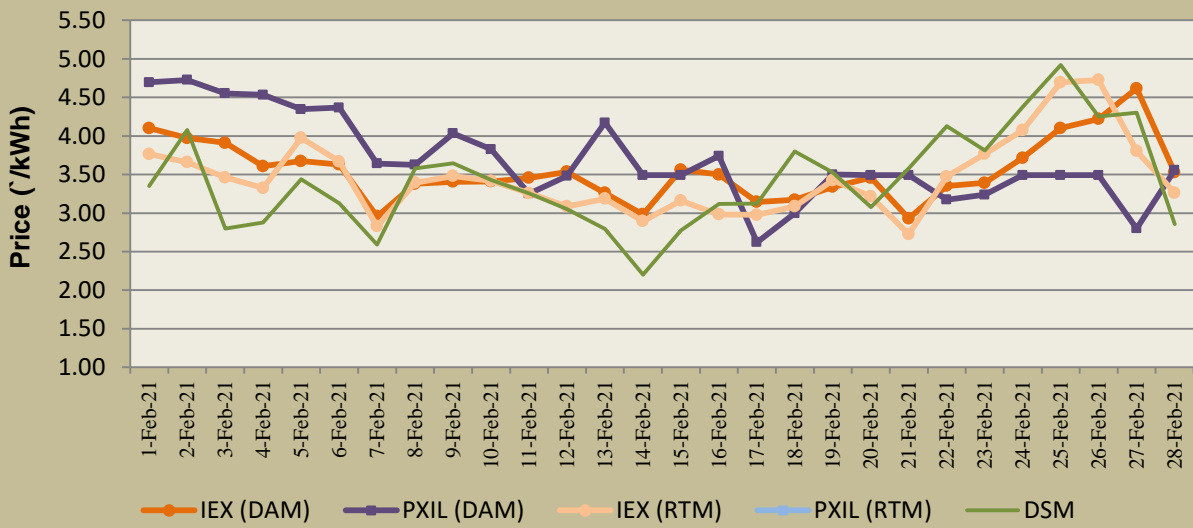


Figure-7: Price of Short-term Transactions of Electricity, February 2021 (Day-wise)



Note: No electricity was transacted in RTM on PXIL in February 2021

Table-11: VOLUME OF ELECTRICITY SOLD THROUGH BILATERAL, FEBRUARY 2021		
Name of the Entity	Volume of Sale (MUs)	% of Volume
PUNJAB	742.18	14.71
SEBPCORP	413.23	8.19
UTTAR PRADESH	339.46	6.73
GUJARAT	324.03	6.42
DELHI	298.07	5.91
DB POWER	297.20	5.89
DVC	246.24	4.88
RKM POWER	234.63	4.65
RPREL	228.87	4.54
JINDAL POWER	226.28	4.48
REGL	178.52	3.54
JINDAL STAGE-II	134.89	2.67
HARYANA	134.16	2.66
ESSAR POWER	123.82	2.45
ADHUNIK POWER LTD	123.48	2.45
CHHATTISGARH	101.28	2.01
MB POWER	100.09	1.98
SKS POWER	98.62	1.95
KARNATAKA	85.33	1.69
JAYPEE NIGRIE	79.56	1.58
JITPL	75.58	1.50
BALCO	66.70	1.32
ONGC PALATANA	53.76	1.07
KSK MAHANADI	34.61	0.69
IL&FS	33.48	0.66
J & K	29.94	0.59
NEEPCO STATIONS	26.67	0.53
MEENAKSHI	26.50	0.53
MP	26.41	0.52
TELANGANA	22.18	0.44
RAJASTHAN	15.88	0.31
DAGACHU	14.78	0.29
ODISHA	13.83	0.27
JHABUA POWER_MP	13.44	0.27
MAHARASHTRA	11.44	0.23
LANKO_AMK	9.07	0.18
JORETHANG	8.75	0.17
WEST BENGAL	8.30	0.16
TASHIDENG HEP	8.23	0.16
SIKKIM	7.71	0.15
ANDHRA PRADESH	7.68	0.15
TRN ENERGY	6.72	0.13
HIMACHAL PRADESH	5.24	0.10
MEGHALAYA	3.27	0.06
TAMIL NADU	2.24	0.04
UTTARAKHAND	1.39	0.03
ACBIL	0.67	0.01
BIHAR	0.59	0.01
GMR KAMALANGA	0.32	0.01
DIKCHU HEP	0.29	0.01
NTPC STATIONS-NER	0.23	0.005
CHUZACHEN HEP	0.19	0.004
Total	5046.04	100.00
Volume Sold by top 5 Regional Entities	2116.97	41.95

Table-12: VOLUME OF ELECTRICITY PURCHASED THROUGH BILATERAL, FEBRUARY 2021

Name of the Entity	Volume of Purchase (MUs)	% of Volume
MP	712.16	14.11
TAMIL NADU	685.55	13.59
TELANGANA	566.51	11.23
RAJASTHAN	480.58	9.52
HIMACHAL PRADESH	451.57	8.95
PUNJAB	354.05	7.02
UTTARAKHAND	228.10	4.52
WEST BENGAL	226.61	4.49
NEPAL(NVVN)	171.03	3.39
HARYANA	151.43	3.00
MAHARASHTRA	143.80	2.85
JHARKHAND	123.48	2.45
UTTAR PRADESH	113.52	2.25
BIHAR	82.86	1.64
ODISHA	79.55	1.58
AMPS Hazira	64.99	1.29
ASSAM	56.11	1.11
ANDHRA PRADESH	49.16	0.97
MEGHALAYA	47.45	0.94
DELHI	40.47	0.80
NEP	40.36	0.80
MANIPUR	33.60	0.67
BANGLADESH	26.50	0.53
GOA	23.96	0.47
CHHATTISGARH	23.18	0.46
DVC	14.02	0.28
GUJARAT	13.29	0.26
ARUNACHAL PRADESH	10.08	0.20
DADRA & NAGAR HAVELI	9.44	0.19
KARNATAKA	7.69	0.15
SIKKIM	7.27	0.14
NAGALAND	6.59	0.13
DAMAN AND DIU	0.94	0.02
TOTAL	5045.91	100.00
Volume Purchased by top 5 Regional Entities	2896.37	57.40

Table-13: VOLUME OF ELECTRICITY SOLD IN DAY AHEAD MARKET THROUGH POWER EXCHANGES, FEBRUARY 2021		
Name of the Entity	Volume of Sale (MUs)	% of Volume
UTTAR PRADESH	878.80	17.21
WEST BENGAL	494.45	9.68
ODISHA	447.55	8.76
JITPL	385.17	7.54
BIHAR	205.96	4.03
SEBICORP	199.92	3.91
JAYPEE NIGRIE	178.67	3.50
DELHI	165.64	3.24
MP	158.59	3.11
KARNATAKA	128.42	2.51
RAJASTHAN	124.21	2.43
GUJARAT	120.42	2.36
JINDAL POWER	110.59	2.17
TEESTA HEP	102.39	2.00
JINDAL STAGE-II	101.78	1.99
EMCO	100.45	1.97
MAHARASHTRA	95.18	1.86
ASSAM	93.90	1.84
REGL	91.64	1.79
DB POWER	89.54	1.75
RPREL	78.14	1.53
MB POWER	74.98	1.47
ESSAR POWER	54.32	1.06
HARYANA	42.29	0.83
TELANGANA	41.77	0.82
HIMACHAL PRADESH	34.19	0.67
MARUTI COAL	33.89	0.66
ADHUNIK POWER LTD	31.16	0.61
TRIPURA	29.78	0.58
KERALA	28.58	0.56
SKS POWER	28.33	0.55
GOA	23.96	0.47
CHHATTISGARH	22.78	0.45
RKM POWER	22.61	0.44
JHABUA POWER_MP	21.33	0.42
SPECTRUM	19.63	0.38
ANDHRA PRADESH	18.38	0.36
ACBIL	17.98	0.35
GMR KAMALANGA	17.06	0.33
BALCO	16.81	0.33
NTPC STATIONS-NER	16.20	0.32
JHARKHAND	15.50	0.30
TAMIL NADU	13.01	0.25
NTPC STATIONS-WR	12.34	0.24
KARCHAM WANGTOO	10.51	0.21
PUNJAB	10.41	0.20
SINGOLI BHATWARI HEP	9.43	0.18
AD HYDRO	9.16	0.18
NLC	8.87	0.17

NTPL	8.75	0.17
SAINJ HEP	8.01	0.16
NTPC STATIONS-SR	7.60	0.15
IL&FS	5.93	0.12
CHANDIGARH	5.76	0.11
DVC	5.69	0.11
KSK MAHANADI	5.42	0.11
DAGACHU	4.23	0.08
ARUNACHAL PRADESH	3.70	0.07
SIKKIM	3.27	0.06
MIZORAM	3.12	0.06
NTPC STATIONS-ER	3.03	0.06
RGPPL	1.60	0.03
JORETHANG	1.14	0.02
TASHIDENG HEP	1.00	0.02
DHARIWAL POWER	0.82	0.02
LANCO BUDHIL	0.46	0.01
J & K	0.41	0.01
ONGC PALATANA	0.29	0.01
NAGALAND	0.19	0.004
CHUZACHEN HEP	0.10	0.002
Total	5107.20	100.00
Volume sold by top 5 Regional Entities	2411.93	47.23

Table-14: VOLUME OF ELECTRICITY PURCHASED IN DAY AHEAD MARKET THROUGH POWER EXCHANGES, FEBRUARY 2021

Name of the Entity	Volume of Purchase (MUs)	% of Volume
GUJARAT	1274.94	24.96
TELANGANA	906.13	17.74
ANDHRA PRADESH	464.15	9.09
TAMIL NADU	442.32	8.66
J & K	334.82	6.56
RAJASTHAN	295.75	5.79
MAHARASHTRA	220.60	4.32
HARYANA	163.09	3.19
UTTAR PRADESH	138.46	2.71
DADRA & NAGAR HAVELI	104.49	2.05
PUNJAB	100.39	1.97
CHHATTISGARH	95.40	1.87
DELHI	92.43	1.81
UTTARAKHAND	76.92	1.51
MP	71.72	1.40
HIMACHAL PRADESH	55.21	1.08
KARNATAKA	46.88	0.92
ASSAM	39.66	0.78
AMPS Hazira	37.01	0.72
BIHAR	35.70	0.70
JHARKHAND	30.27	0.59
DAMAN AND DIU	23.23	0.45
KERALA	18.73	0.37
ODISHA	15.06	0.29
GOA	10.46	0.20
MEGHALAYA	4.93	0.10
CHANDIGARH	3.29	0.06
WEST BENGAL	2.99	0.06
ARUNACHAL PRADESH	2.13	0.04
TOTAL	5107.20	100.00
Volume purchased by top 5 Regional Entities	3422.36	67.01

Table-15: VOLUME OF ELECTRICITY SOLD IN REAL TIME MARKET THROUGH POWER EXCHANGES, FEBRUARY 2021		
Name of the Entity	Volume of Sale (MUs)	% of Volume
UTTAR PRADESH	130.75	11.69
ODISHA	123.49	11.04
WEST BENGAL	103.10	9.22
MP	74.46	6.66
DVC	68.01	6.08
NLC	65.81	5.88
KARNATAKA	59.62	5.33
RKM POWER	59.40	5.31
SEMBCORP	46.46	4.15
DELHI	36.75	3.29
MB POWER	31.82	2.85
TRIPURA	28.49	2.55
NEEPCO STATIONS	25.49	2.28
RAJASTHAN	25.11	2.24
CHHATTISGARH	19.87	1.78
MANIPUR	17.26	1.54
NTPL	16.61	1.48
MEENAKSHI	14.25	1.27
NTPC STATIONS-SR	13.93	1.25
MAHARASHTRA	13.55	1.21
GUJARAT	13.17	1.18
JINDAL STAGE-II	13.13	1.17
EMCO	12.14	1.09
NTPC STATIONS-WR	11.28	1.01
JHABUA POWER_MP	9.78	0.87
HIMACHAL PRADESH	8.07	0.72
BIHAR	7.54	0.67
NTPC STATIONS-ER	7.11	0.64
KERALA	6.33	0.57
TELANGANA	4.90	0.44
NTPC STATIONS-NER	4.84	0.43
BALCO	4.77	0.43
JINDAL POWER	4.68	0.42
GMR KAMALANGA	3.93	0.35
ASSAM	3.70	0.33
NTPC STATIONS-NR	3.61	0.32
DB POWER	2.76	0.25
RPREL	2.72	0.24
SIKKIM	2.72	0.24
HARYANA	2.46	0.22
SKS POWER	2.19	0.20
REGL	2.04	0.18
J & K	1.80	0.16
TAMIL NADU	1.36	0.12
BRBCL,NABINAGAR	1.28	0.11
PUNJAB	0.84	0.08
SPECTRUM	0.84	0.08
RGPPL_IR	0.83	0.07
ONGC PALATANA	0.59	0.05

IL&FS	0.45	0.04
MARUTI COAL	0.35	0.03
SINGOLI BHATWARI HEP	0.34	0.03
RGPPL	0.28	0.03
RGPPL_Others	0.24	0.02
KARCHAM WANGTOO	0.24	0.02
DIKCHU HEP	0.22	0.02
ANDHRA PRADESH	0.19	0.02
SASAN UMPP	0.16	0.01
CGPL	0.13	0.01
DHARIWAL POWER	0.09	0.01
CHANDIGARH	0.08	0.01
JORETHANG	0.03	0.003
Total	1118.45	100.00
Volume sold by top 5 Regional Entities	499.81	44.69

Table-16: VOLUME OF ELECTRICITY PURCHASED IN REAL TIME MARKET THROUGH POWER EXCHANGES, FEBRUARY 2021

Name of the Entity	Volume of Purchase (MUs)	% of Volume
J & K	305.82	27.34
TELANGANA	251.31	22.47
RAJASTHAN	112.75	10.08
GUJARAT	88.30	7.89
ANDHRA PRADESH	60.49	5.41
UTTAR PRADESH	33.94	3.03
PUNJAB	33.74	3.02
DELHI	33.63	3.01
ODISHA	27.91	2.50
MAHARASHTRA	26.82	2.40
TAMIL NADU	20.81	1.86
BIHAR	19.35	1.73
CHHATTISGARH	19.33	1.73
WEST BENGAL	15.29	1.37
HIMACHAL PRADESH	13.20	1.18
HARYANA	11.75	1.05
KERALA	8.79	0.79
ASSAM	5.88	0.53
REGL	5.23	0.47
DADRA & NAGAR HAVELI	5.12	0.46
MP	3.93	0.35
MEGHALAYA	2.84	0.25
KARNATAKA	2.51	0.22
RPREL	2.04	0.18
JHARKHAND	1.77	0.16
GOA	1.58	0.14
UTTARAKHAND	1.28	0.11
AMPS Hazira	1.26	0.11
MANIPUR	0.87	0.08
DAMAN AND DIU	0.51	0.05
DVC	0.12	0.01
SIKKIM	0.11	0.01
ARUNACHAL PRADESH	0.07	0.01
JINDAL POWER	0.05	0.005
MEENAKSHI	0.04	0.004
TRIPURA	0.02	0.001
TOTAL	1118.45	100.00
Volume purchased by top 5 Regional Entities	818.67	73.20

Table-17: VOLUME OF ELECTRICITY UNDER DRAWAL (EXPORTED) THROUGH DSM, FEBRUARY 2021		
Name of the Entity	Volume of Under drawal (MUs)	% of Volume
NTPC STATIONS-WR	204.42	11.20
KAPP 3&4	76.93	4.22
KARNATAKA	76.88	4.21
NHPC STATIONS	72.98	4.00
MP	72.14	3.95
MAHARASHTRA	71.54	3.92
UTTAR PRADESH	68.31	3.74
GUJARAT	60.55	3.32
TAMIL NADU	59.64	3.27
SASAN UMPP	55.68	3.05
PUNJAB	48.36	2.65
RAJASTHAN	44.89	2.46
TELANGANA	42.85	2.35
ANDHRA PRADESH	41.77	2.29
ODISHA	35.36	1.94
NLC	33.28	1.82
NTPC STATIONS-NR	32.94	1.81
NTPC STATIONS-SR	32.45	1.78
DELHI	31.54	1.73
BIHAR	28.93	1.59
WEST BENGAL	27.46	1.51
NTPC STATIONS-ER	26.88	1.47
DVC	25.78	1.41
J & K	21.99	1.21
KERALA	21.66	1.19
HARYANA	21.29	1.17
HIMACHAL PRADESH	18.53	1.02
AMPS Hazira	16.68	0.91
CHUKHA HEP	16.48	0.90
CHHATTISGARH	15.03	0.82
GIWEL_BHUJ	14.35	0.79
UTTARAKHAND	13.70	0.75
JINDAL STAGE-II	13.27	0.73
JHARKHAND	12.51	0.69
TRIPURA	11.33	0.62
BBMB	9.52	0.52
ESSAR POWER	8.59	0.47
MB POWER	8.10	0.44
RENEW_BHACHAU	8.09	0.44
OSTRO	7.85	0.43
JINDAL POWER	7.83	0.43
JHABUA POWER_MP	7.43	0.41
NEEPCO STATIONS	7.39	0.41
TATA_PVGD	7.23	0.40
ALFANAR_BHUJ	7.04	0.39
GOA	6.73	0.37
ADHUNIK POWER LTD	6.69	0.37
PONDICHERRY	6.50	0.36
ASSAM	6.38	0.35
NAPP	6.04	0.33
EMCO	5.70	0.31
CLEAN_SLR	5.67	0.31
RENEW_BHUJ	5.59	0.31
FORTUM2_PVGD	5.58	0.31
NJPC	5.37	0.29
GMR KAMALANGA	5.05	0.28
GIWEL_TCIN	5.04	0.28
ACBIL	4.85	0.27
RPREL	4.60	0.25

ARUNACHAL PRADESH	4.30	0.24
JAYPEE NIGRIE	4.23	0.23
DHARIWAL POWER	3.95	0.22
ORANGE_TCN	3.92	0.21
SEMBCORP	3.74	0.21
MTPS II	3.73	0.20
RAMPUR HEP	3.73	0.20
LANKO_AMK	3.71	0.20
NETCL VALLUR	3.63	0.20
TEESTA HEP	3.62	0.20
NTPC_ANTP	3.61	0.20
NPGC	3.38	0.19
AYANA_NPKUNTA	3.28	0.18
AVAADA2_PVGD	3.21	0.18
BETAM_TCN	3.06	0.17
MANIPUR	3.03	0.17
AVAADA1_PVGD	3.00	0.16
ACME_SLR	2.93	0.16
SIKKIM	2.89	0.16
KARCHAM WANGTOO	2.84	0.16
BRBCL,NABINAGAR	2.81	0.15
AZURE_PVGD	2.80	0.15
DB POWER	2.78	0.15
CGPL	2.75	0.15
MYTRAH_TCN	2.67	0.15
PARAM_PVGD	2.66	0.15
RKM POWER	2.63	0.14
MANGDECHU HEP	2.63	0.14
DADRA & NAGAR HAVELI	2.58	0.14
IGSTPS	2.57	0.14
SBG_NPK	2.54	0.14
RAIL	2.50	0.14
SPRNG_NPKUNTA	2.43	0.13
BANGLADESH	2.43	0.13
CHANDIGARH	2.41	0.13
INOX_BHUJ	2.38	0.13
TEHRI	2.34	0.13
RENEW_SLR_BKN	2.20	0.12
SB_SLR	2.19	0.12
THERMAL POWERTECH	2.13	0.12
MAITHON POWER LTD	2.09	0.11
SINGOLI BHATWARI HEP	2.08	0.11
REGL	2.02	0.11
TATA_ANTP	2.01	0.11
KSK MAHANADI	1.94	0.11
JITPL	1.93	0.11
AGEMPL BHUJ	1.83	0.10
MIZORAM	1.78	0.10
NAGALAND	1.77	0.10
KOTESHWAR	1.68	0.09
SBG_PVGD	1.67	0.09
MEGHALAYA	1.67	0.09
NTPC STATIONS-NER	1.61	0.09
TRN ENERGY	1.57	0.09
ACME RUMS	1.55	0.08
RAP B	1.53	0.08
NSPCL	1.50	0.08
COASTGEN	1.49	0.08
TATA_SLR	1.46	0.08
RGPPL	1.45	0.08
BALCO	1.34	0.07
SKS POWER	1.31	0.07
ARS_PVGD	1.31	0.07

NTPL	1.30	0.07
ADY2_PVGD	1.25	0.07
RAP C	1.25	0.07
ARINSUM_RUMS	1.23	0.07
FRV_NPK	1.23	0.07
AZURE34_SLR	1.23	0.07
ADY13_PVGD	1.22	0.07
ADY6_PVGD	1.19	0.07
ADY10_PVGD	1.14	0.06
AZURE_SLR	1.10	0.06
ADY3_PVGD	1.07	0.06
ADY1_PVGD	1.07	0.06
TEESTA STG3	1.03	0.06
FORTUM1_PVGD	1.02	0.06
AKS_PVGD	1.00	0.06
MAHINDRA_RUMS	0.98	0.05
IL&FS	0.97	0.05
RENEW_PVGD	0.92	0.05
YARROW_PVGD	0.92	0.05
ONGC PALATANA	0.91	0.05
ABSP_ANTP	0.90	0.05
AKSP_ANTP	0.89	0.05
NFF	0.78	0.04
AZURE_ANTP	0.75	0.04
DIKCHU HEP	0.75	0.04
RANGANADI HEP	0.73	0.04
ARERJL_SLR	0.71	0.04
DAMAN AND DIU	0.71	0.04
MEENAKSHI	0.71	0.04
KREDL_PVGD	0.61	0.03
RANGIT HEP	0.61	0.03
AHSP_ANTP	0.58	0.03
LOKTAK	0.53	0.03
NEP	0.51	0.03
FRV_ANTP	0.50	0.03
BARC	0.49	0.03
NEPAL(NVVN)	0.48	0.03
BHADRAVATHI HVDC	0.46	0.03
KSMPL_SLR	0.45	0.02
AD HYDRO	0.42	0.02
DOYANG HEP	0.40	0.02
SHREE CEMENT	0.40	0.02
SAINJ HEP	0.34	0.02
AZURE43_SLR	0.32	0.02
ASEJTL_SLR	0.32	0.02
RENEW_SLR	0.29	0.02
PARE HEP	0.27	0.01
JORETHANG	0.27	0.01
TASHIDENG HEP	0.26	0.01
VINDHYACHAL HVDC	0.25	0.01
LANCO BUDHIL	0.22	0.01
HVDC RAIGARH	0.16	0.01
HVDC PUS	0.06	0.004
HVDC ALPD	0.06	0.003
CHUZACHEN HEP	0.06	0.003
TALA HEP	0.06	0.003
DCPP	0.02	0.001
DAGACHU	0.01	0.001
SIMHAPURI	0.01	0.0003
HVDC CHAMPA	0.002	0.0001
Total	1824.43	100.00
Volume Exported by top 5 Regional Entities	503.35	27.59

**Table-18: VOLUME OF ELECTRICITY OVER DRAWAL (IMPORTED) THROUGH DSM,
FEBRUARY 2021**

Name of the Entity	Volume of Over drawal (MUs)	% of Volume
RAJASTHAN	86.93	5.65
NTPC STATIONS-NR	65.08	4.23
UTTAR PRADESH	58.42	3.80
GUJARAT	55.66	3.62
NTPC STATIONS-ER	54.43	3.54
NTPC STATIONS-WR	52.91	3.44
BIHAR	49.40	3.21
HARYANA	44.39	2.89
TAMIL NADU	42.37	2.76
TELANGANA	42.01	2.73
CHHATTISGARH	40.48	2.63
MAHARASHTRA	40.08	2.61
TALA HEP	39.55	2.57
NLC	37.29	2.43
ANDHRA PRADESH	37.01	2.41
MP	34.69	2.26
KURICHU HEP	34.44	2.24
NTPC STATIONS-SR	30.00	1.95
KARNATAKA	29.45	1.92
WEST BENGAL	27.13	1.76
NEPAL(NVVN)	25.72	1.67
J & K	25.42	1.65
UTTARAKHAND	24.81	1.61
CGPL	23.67	1.54
AMPS Hazira	23.35	1.52
DVC	21.92	1.43
PUNJAB	19.94	1.30
KERALA	19.46	1.27
ODISHA	19.28	1.25
HIMACHAL PRADESH	17.12	1.11
JHARKHAND	15.77	1.03
RPREL	13.82	0.90
REGL	13.23	0.86
BALCO	13.14	0.85
ASSAM	11.49	0.75
NETCL VALLUR	11.47	0.75
JHABUA POWER_MP	10.83	0.70
NHPC STATIONS	10.34	0.67
RGPPL	9.92	0.64
DELHI	9.29	0.60
RKM POWER	8.92	0.58
AGEMPL BHUJ	8.56	0.56
DADRA & NAGAR HAVELI	7.62	0.50
MYTRAH_TCN	7.23	0.47
DAMAN AND DIU	7.17	0.47
GIWEL_TCN	7.14	0.46
NEP	6.71	0.44
MB POWER	6.59	0.43
RAIL	6.57	0.43
GIWEL_BHUJ	6.37	0.41
ORANGE_TCN	6.07	0.39
DB POWER	6.06	0.39
MEGHALAYA	5.94	0.39
EMCO	5.82	0.38
RAP B	5.63	0.37
IGSTPS	5.57	0.36
THERMAL POWERTECH	5.40	0.35
NAPP	5.03	0.33
GOA	4.83	0.31
NTPC STATIONS-NER	4.58	0.30

TEESTA STG3	4.54	0.30
BBMB	4.50	0.29
MAHINDRA_RUMS	4.39	0.29
CHANDIGARH	4.38	0.28
BETAM_TCN	4.23	0.28
ALFANAR_BHUI	3.97	0.26
COASTGEN	3.94	0.26
INOX_BHUI	3.46	0.23
OSTRO	3.38	0.22
ARUNACHAL PRADESH	3.31	0.21
MAITHON POWER LTD	3.12	0.20
KAPP 3&4	3.10	0.20
MANGDECHU HEP	3.06	0.20
NPGC	2.97	0.19
NTPL	2.89	0.19
IL&FS	2.88	0.19
RENEW_BHACHAU	2.79	0.18
ARINSUM_RUMS	2.75	0.18
KARCHAM WANGTOO	2.74	0.18
RENEW_BHUI	2.67	0.17
DAGACHU	2.66	0.17
NSPCL	2.58	0.17
MIZORAM	2.49	0.16
BANGLADESH	2.47	0.16
SEMBCORP	2.46	0.16
SINGOLI BHATWARI HEP	2.38	0.16
JINDAL STAGE-II	2.31	0.15
PONDICHERRY	2.29	0.15
BRBCL,NABINAGAR	2.27	0.15
TATA_PVGD	2.23	0.14
TEHRI	2.12	0.14
NTPC_ANTP	2.09	0.14
GMR KAMALANGA	2.05	0.13
MANIPUR	2.03	0.13
SASAN UMPP	2.02	0.13
JINDAL POWER	2.01	0.13
JORETHANG	1.96	0.13
NEEPCO STATIONS	1.90	0.12
SIKKIM	1.86	0.12
SBG_PVGD	1.79	0.12
NJPC	1.77	0.11
AZURE_SLR	1.75	0.11
MEENAKSHI	1.74	0.11
ACME_RUMS	1.69	0.11
SBG_NPK	1.63	0.11
MTPS II	1.59	0.10
ARERJL_SLR	1.55	0.10
TASHIDENG HEP	1.53	0.10
JAYPEE NIGRIE	1.51	0.10
ACBIL	1.47	0.10
HVDC CHAMPA	1.47	0.10
SPRNG_NPKUNTA	1.40	0.09
JITPL	1.35	0.09
KSK MAHANADI	1.34	0.09
RANGANADI HEP	1.29	0.08
RENEW_SLR_BKN	1.28	0.08
TRIPURA	1.16	0.08
CHUKHA HEP	1.15	0.07
CLEAN_SLR	1.08	0.07
AZURE34_SLR	1.04	0.07
ADHUNIK POWER LTD	1.02	0.07
DGEN MEGA POWER	1.02	0.07
PARAM_PVGD	1.00	0.07
SB_SLR	0.91	0.06

ESSAR POWER	0.86	0.06
NAGALAND	0.85	0.06
FORTUM1_PVGD	0.84	0.05
DIKCHU HEP	0.82	0.05
FORTUM2_PVGD	0.78	0.05
NFF	0.75	0.05
KOTESHWAR	0.72	0.05
RANGIT HEP	0.72	0.05
ACME_SLR	0.63	0.04
LOKTAK	0.58	0.04
AVAADA1_PVGD	0.57	0.04
TEESTA HEP	0.56	0.04
TATA_SLR	0.54	0.04
AVAADA2_PVGD	0.54	0.03
AYANA_NPKUNTA	0.49	0.03
SKS POWER	0.49	0.03
KREDL_PVGD	0.49	0.03
AHSP_ANTP	0.48	0.03
TATA_ANTP	0.47	0.03
LANKO KONDAPALLI	0.47	0.03
FRV_ANTP	0.45	0.03
ASEJTL_SLR	0.39	0.03
RENEW_SLR	0.39	0.03
DHARIWAL POWER	0.37	0.02
AKS_PVGD	0.35	0.02
AZURE_PVGD	0.35	0.02
DCPP	0.33	0.02
AZURE43_SLR	0.32	0.02
SIMHAPURI	0.31	0.02
AKSP_ANTP	0.31	0.02
FRV_NPK	0.31	0.02
YARROW_PVGD	0.30	0.02
ABSP_ANTP	0.30	0.02
AZURE_ANTP	0.30	0.02
SHREE CEMENT	0.29	0.02
RENEW_PVGD	0.29	0.02
AD HYDRO	0.29	0.02
ADY3_PVGD	0.27	0.02
ADY6_PVGD	0.26	0.02
ONGC PALATANA	0.26	0.02
RAMPUR HEP	0.25	0.02
PARE HEP	0.25	0.02
KSMPL_SLR	0.24	0.02
ADY1_PVGD	0.23	0.02
BARC	0.21	0.01
DOYANG HEP	0.21	0.01
ARS_PVGD	0.21	0.01
RAP C	0.20	0.01
ADY13_PVGD	0.19	0.01
ADY10_PVGD	0.19	0.01
VINDHYACHAL HVDC	0.19	0.01
ADY2_PVGD	0.17	0.01
LANCO BUDHIL	0.14	0.01
CHUZACHEN HEP	0.12	0.01
LANKO_AMK	0.11	0.01
SAINJ HEP	0.11	0.01
TRN ENERGY	0.05	0.003
HVDC ALPD	0.03	0.002
VANDANA VIDYUT	0.03	0.002
HVDC RAIGARH	0.02	0.001
BHADRAVATHI HVDC	0.01	0.001
HVDC PUS	0.01	0.0004
TOTAL	1537.50	100.00
Volume Imported by top 5 Regional Entities	320.53	20.85

**Table-19: TOTAL VOLUME OF NET SHORT-TERM TRANSACTIONS OF ELECTRICITY
(REGIONAL ENTITY-WISE), FEBRUARY 2021**

S. No.	Name of the Entity	Total volume of net short-term transactions of electricity*
1	TELANGANA	1654.26
2	TAMIL NADU	1114.80
3	GUJARAT	914.02
4	RAJASTHAN	765.92
5	J & K	611.91
6	ANDHRA PRADESH	542.79
7	MP	490.90
8	HIMACHAL PRADESH	471.08
9	UTTARAKHAND	316.02
10	MAHARASHTRA	239.57
11	NEPAL(NVVN)	196.27
12	HARYANA	170.46
13	JHARKHAND	143.29
14	DADRA & NAGAR HAVELI	124.09
15	AMPS Hazira	109.93
16	MEGHALAYA	56.22
17	NEP	46.56
18	TALA HEP	39.49
19	KURICHU HEP	34.44
20	DAMAN AND DIU	31.14
21	NTPC STATIONS-NR	28.53
22	BANGLADESH	26.54
23	CGPL	20.79
24	CHHATTISGARH	19.44
25	NTPC STATIONS-ER	17.41
26	MANIPUR	16.21
27	GOA	10.15
28	ASSAM	9.18
29	NETCL VALLUR	7.84
30	ARUNACHAL PRADESH	7.57
31	AGEMPL BHUJ	6.73
32	RGPPL	6.58
33	NAGALAND	5.49
34	MYTRAH_TCN	4.57
35	RAP B	4.10
36	RAIL	4.07
37	TEESTA STG3	3.51
38	MAHINDRA_RUMS	3.41
39	THERMAL POWERTECH	3.27
40	IGSTPS	3.00
41	COASTGEN	2.45
42	ORANGE_TCN	2.15
43	GIWEL_TCN	2.10
44	ARINSUM_RUMS	1.52
45	HVDC CHAMPA	1.47
46	BETAM_TCN	1.17
47	INOX_BHUJ	1.08
48	NSPCL	1.08
49	MAITHON POWER LTD	1.03
50	DGEN MEGA POWER	1.02
51	ARERJL_SLR	0.83
52	AZURE_SLR	0.64
53	RANGANADI HEP	0.56
54	LANKO KONDAPALLI	0.47
55	MANGDECHU HEP	0.44
56	DCPP	0.32
57	SIMHAPURI	0.31
58	ACME_RUMS	0.15
59	SBG_PVGD	0.12

60	RANGIT HEP	0.11
61	RENEW_SLR	0.10
62	ASEJTL_SLR	0.07
63	LOKTAK	0.05
64	VANDANA VIDYUT	0.03
65	AZURE43_SLR	-0.004
66	PARE HEP	-0.02
67	HVDC ALPD	-0.03
68	NFF	-0.03
69	FRV_ANTP	-0.05
70	HVDC PUS	-0.06
71	VINDHYACHAL HVDC	-0.06
72	AHSP_ANTP	-0.10
73	SHREE CEMENT	-0.10
74	KREDL_PVGD	-0.12
75	HVDC RAIGARH	-0.15
76	FORTUM1_PVGD	-0.18
77	AZURE34_SLR	-0.19
78	DOYANG HEP	-0.19
79	KSMPL_SLR	-0.21
80	TEHRI	-0.22
81	CHUZACHEN HEP	-0.23
82	RGPPL_Others	-0.24
83	BARC	-0.28
84	NPGC	-0.41
85	DIKCHU HEP	-0.43
86	BHADRAVATHI HVDC	-0.45
87	AZURE_ANTP	-0.45
88	LANCO BUDHIL	-0.53
89	AKSP_ANTP	-0.58
90	CHANDIGARH	-0.58
91	ABSP_ANTP	-0.60
92	YARROW_PVGD	-0.61
93	RENEW_PVGD	-0.63
94	AKS_PVGD	-0.65
95	ADY3_PVGD	-0.80
96	RGPPL_IR	-0.83
97	ADY1_PVGD	-0.84
98	SBG_NPK	-0.91
99	TATA_SLR	-0.92
100	FRV_NPK	-0.92
101	RENEW_SLR_BKN	-0.93
102	ADY6_PVGD	-0.93
103	ADY10_PVGD	-0.94
104	KOTESHWAR	-0.96
105	NAPP	-1.01
106	ADY13_PVGD	-1.03
107	SPRNG_NPKUNTA	-1.03
108	RAP C	-1.05
109	ADY2_PVGD	-1.08
110	ARS_PVGD	-1.10
111	SB_SLR	-1.28
112	NTPC_ANTP	-1.52
113	TATA_ANTP	-1.54
114	PARAM_PVGD	-1.66
115	BRBCL,NABINAGAR	-1.83
116	MTPS II	-2.14
117	ACME_SLR	-2.31
118	MIZORAM	-2.41
119	AVAADA1_PVGD	-2.42
120	AZURE_PVGD	-2.45
121	AVAADA2_PVGD	-2.68
122	AYANA_NPKUNTA	-2.79
123	RENEW_BHUJ	-2.92
124	ALFANAR_BHUJ	-3.07
125	RAMPUR HEP	-3.47
126	NJPC	-3.60

127	PONDICHERY	-4.22
128	OSTRO	-4.48
129	DHARIWAL POWER	-4.49
130	CLEAN_SLR	-4.59
131	FORTUM2_PVGD	-4.80
132	TATA_PVGD	-5.00
133	BBMB	-5.02
134	RENEW_BHACHAU	-5.30
135	SIKKIM	-7.34
136	TASHIDENG HEP	-7.97
137	GIWEL_BHUI	-7.98
138	JORETHANG	-8.24
139	SAINJ HEP	-8.24
140	TRN ENERGY	-8.25
141	AD HYDRO	-9.30
142	SINGOLI BHATWARI HEP	-9.46
143	KERALA	-9.58
144	KARCHAM WANGTOO	-10.85
145	LANKO_AMK	-12.67
146	CHUKHA HEP	-15.33
147	DAGACHU	-16.37
148	NTPC STATIONS-NER	-18.30
149	SPECTRUM	-20.47
150	ACBIL	-22.04
151	NTPL	-23.78
152	NTPC STATIONS-SR	-23.98
153	GMR KAMALANGA	-24.32
154	MARUTI COAL	-34.23
155	IL&FS	-37.94
156	MEENAKSHI	-39.68
157	KSK MAHANADI	-40.63
158	JHABUA POWER_MP	-41.16
159	SASAN UMPP	-53.83
160	ONGC PALATANA	-55.29
161	BIHAR	-55.72
162	NEEPCO STATIONS	-57.64
163	NHPC STATIONS	-62.64
164	TRIPURA	-68.42
165	NLC	-70.68
166	KAPP 3&4	-73.83
167	BALCO	-76.48
168	TEESTA HEP	-105.45
169	EMCO	-112.48
170	SKS POWER	-129.96
171	ADHUNIK POWER LTD	-160.31
172	NTPC STATIONS-WR	-175.13
173	ESSAR POWER	-185.87
174	MB POWER	-208.40
175	REGL	-255.77
176	JINDAL STAGE-II	-260.76
177	JAYPEE NIGRIE	-260.95
178	KARNATAKA	-263.72
179	PUNJAB	-293.66
180	RPREL	-298.48
181	DVC	-309.67
182	RKM POWER	-310.35
183	JINDAL POWER	-347.31
184	DELHI	-356.18
185	WEST BENGAL	-361.29
186	DB POWER	-386.22
187	JITPL	-461.33
188	ODISHA	-478.43
189	SEMBCORP	-660.90
190	UTTAR PRADESH	-1072.97

* Total volume of net short-term transactions of electricity includes net of transactions of electricity through bilateral, power exchange and UI

(-) indicates sale and (+) indicates purchase

Table-20: DETAILS OF CONGESTION IN POWER EXCHANGES, FEBRUARY 2021					
	Details of Congestion	Day Ahead Market		Real Time Market	
		IEX	PXIL	IEX	PXIL
A	Unconstrained Cleared Volume (MUs)	5099.75	7.44	1119.07	0.00
B	Actual Cleared Volume and hence scheduled (MUs)	5099.75	7.44	1118.45	0.00
C	Volume of electricity that could not be cleared and hence not scheduled because of congestion (MUs) *	0.00	0.00	0.61	0.00
D	Volume of electricity that could not be cleared and hence not scheduled because of reasons other than congestion (MUs)	0.00	0.00	0.00	0.00
E	Volume of electricity that could not be cleared as % to Unconstrained Cleared Volume	0.00%	0.00%	0.05%	0.00%
F	Percentage of the time congestion occurred during the month (Number of hours congestion occurred/Total number of hours in the month)	0.00%	0.00%	1.34%	0.00%
G	Congestion occurrence (%) time block wise				
	0.00 - 6.00 hours	0.00%	0.00%	0.00%	0.00%
	6.00 - 12.00 hours	0.00%	0.00%	16.67%	0.00%
	12.00 - 18.00 hours	0.00%	0.00%	0.00%	0.00%
	18.00 - 24.00 hours	0.00%	0.00%	83.33%	0.00%
<i>*This power would have been scheduled had there been no congestion.</i>					
<i>Source: IEX, PXIL& NLDC</i>					

Table-21: VOLUME OF SHORT-TERM TRANSACTIONS OF ELECTRICITY IN INDIA (DAY-WISE) (MUs), FEBRUARY 2021								
Date	Bilateral		Day Ahead Market [#]		Real Time Market [#]		Deviation Settlement (Over Drawl + Under Generation)	Total Electricity Generation (MU) as given at CEA Website*
	Through Traders and PXs**	Direct	IEX	PXIL	IEX	PXIL		
1-Feb-21	120.94	62.86	170.36	0.17	49.17	0.00	59.41	3646.92
2-Feb-21	121.76	63.26	176.15	0.17	44.02	0.00	61.79	3675.38
3-Feb-21	128.21	65.57	176.02	0.35	39.53	0.00	59.56	3698.50
4-Feb-21	127.28	68.99	185.82	0.35	40.86	0.00	61.19	3593.45
5-Feb-21	130.59	60.47	174.30	0.25	42.72	0.00	61.79	3588.79
6-Feb-21	121.52	58.77	183.16	0.29	38.22	0.00	59.49	3562.53
7-Feb-21	130.37	58.66	160.51	0.47	34.87	0.00	59.75	3439.59
8-Feb-21	120.71	56.78	182.03	0.47	36.59	0.00	59.63	3567.06
9-Feb-21	120.14	59.06	183.51	0.31	38.02	0.00	57.25	3667.45
10-Feb-21	117.20	57.32	203.71	0.35	34.41	0.00	56.40	3685.17
11-Feb-21	119.46	56.56	202.98	0.25	34.18	0.00	56.99	3669.62
12-Feb-21	113.62	56.64	197.42	0.16	30.43	0.00	64.77	3655.58
13-Feb-21	120.16	54.41	191.16	0.17	39.49	0.00	63.77	3637.62
14-Feb-21	118.38	54.32	180.64	0.30	34.11	0.00	64.58	3538.84
15-Feb-21	142.16	56.96	192.17	0.39	39.25	0.00	67.45	3633.44
16-Feb-21	143.45	50.75	187.73	0.30	28.28	0.00	66.26	3651.30
17-Feb-21	146.79	47.03	169.65	0.09	34.87	0.00	63.45	3600.48
18-Feb-21	137.28	47.07	182.12	0.18	36.84	0.00	61.61	3573.74
19-Feb-21	134.65	46.50	171.55	0.12	52.73	0.00	62.67	3511.14
20-Feb-21	137.85	46.55	180.84	0.30	39.47	0.00	58.58	3463.58
21-Feb-21	133.46	43.56	152.98	0.30	35.27	0.00	56.89	3354.09
22-Feb-21	136.20	47.99	159.93	0.27	50.03	0.00	56.93	3514.38
23-Feb-21	137.01	46.54	178.73	0.21	50.90	0.00	53.00	3605.14
24-Feb-21	127.84	48.76	199.90	0.30	40.62	0.00	53.97	3657.95
25-Feb-21	127.99	48.36	189.88	0.30	38.54	0.00	59.50	3731.76
26-Feb-21	112.83	48.81	185.49	0.30	48.34	0.00	57.08	3737.89
27-Feb-21	104.67	49.55	191.65	0.16	47.04	0.00	56.78	3737.59
28-Feb-21	101.95	49.35	189.36	0.18	39.65	0.00	60.32	3658.45
Total	3534.47	1511.44	5099.75	7.44	1118.45	0.00	1680.84	101057.43

Source: NLDC

* Gross Electricity Generation excluding electricity generation from renewables and captive power plants.

** The volume of bilateral through PXs represents the volume through term-ahead contracts.

Scheduled volume of all the bid areas.

Table-22: PRICE OF SHORT-TERM TRANSACTIONS OF ELECTRICITY (DAY-WISE)(₹/kWh), FEBRUARY 2021									
Market Segment	Day ahead market of IEX			Day ahead market of PXIL			Under Draw/Over Draw from the Grid (DSM)		
Date	Minimum ACP	Maximum ACP	Weighted Average Price*	Minimum ACP	Maximum ACP	Weighted Average Price*	All India Grid		
							Minimum Price	Maximum Price	Average Price**
1-Feb-21	1.91	8.00	4.10	3.45	5.66	4.70	0.00	8.00	3.35
2-Feb-21	2.00	7.00	3.97	3.29	5.79	4.73	0.00	8.00	4.08
3-Feb-21	2.00	7.25	3.91	3.29	5.99	4.55	0.00	7.18	2.80
4-Feb-21	1.99	6.50	3.61	3.39	6.00	4.53	0.00	7.14	2.88
5-Feb-21	1.67	6.50	3.67	3.30	6.00	4.35	0.00	8.00	3.44
6-Feb-21	1.82	6.81	3.63	3.49	5.16	4.37	0.00	6.56	3.13
7-Feb-21	2.00	4.25	2.96	3.49	4.99	3.64	0.00	6.71	2.59
8-Feb-21	1.87	5.33	3.38	3.49	4.99	3.63	0.00	8.00	3.58
9-Feb-21	1.95	5.70	3.41	2.58	4.90	4.03	0.00	8.00	3.64
10-Feb-21	2.00	5.71	3.41	2.58	6.00	3.83	0.00	8.00	3.43
11-Feb-21	1.58	6.00	3.46	2.75	3.49	3.25	0.00	8.00	3.26
12-Feb-21	2.00	6.00	3.54	3.19	3.94	3.48	0.00	7.12	3.05
13-Feb-21	2.09	6.00	3.26	3.49	4.99	4.17	0.00	5.86	2.79
14-Feb-21	2.15	4.43	2.98	3.49	3.49	3.49	0.00	5.43	2.20
15-Feb-21	2.00	6.00	3.56	3.49	3.49	3.49	0.00	6.28	2.77
16-Feb-21	2.21	6.00	3.50	3.49	4.99	3.74	0.00	6.84	3.12
17-Feb-21	2.19	5.00	3.14	2.62	2.63	2.62	0.00	6.45	3.12
18-Feb-21	2.19	5.00	3.17	2.63	7.39	3.00	0.61	7.69	3.80
19-Feb-21	1.97	5.01	3.34	2.63	13.95	3.50	0.00	7.40	3.53
20-Feb-21	2.19	5.10	3.46	3.49	3.49	3.49	0.00	8.00	3.08
21-Feb-21	2.25	4.40	2.93	3.49	3.49	3.49	0.00	7.04	3.58
22-Feb-21	2.19	5.10	3.35	2.80	4.34	3.17	0.00	8.00	4.13
23-Feb-21	2.26	5.50	3.39	2.80	5.80	3.24	0.00	8.00	3.81
24-Feb-21	2.48	6.52	3.72	3.49	3.49	3.49	0.00	8.00	4.38
25-Feb-21	2.51	7.54	4.10	3.49	3.49	3.49	0.00	8.00	4.92
26-Feb-21	2.57	8.50	4.22	3.49	3.49	3.49	0.00	7.52	4.25
27-Feb-21	2.67	8.75	4.62	2.80	2.80	2.80	0.00	7.57	4.30
28-Feb-21	2.63	6.25	3.53	3.46	4.99	3.56	0.00	6.86	2.86
	1.58[#]	8.75[#]	3.56	2.58[#]	13.95[#]	3.73	0.00[#]	8.00[#]	3.42

Source: Data on price of PX transactions from IEX and PXIL and data on DSM Price from NLDC.

* Weighted average price computed based on Area Clearing Volume (ACV) and Area Clearing Price (ACP) for each hour of the day. Here, ACV and ACP represent the scheduled volume and weighted average price of all the bid areas of power exchanges.

** Simple average price of DSM of 96 time blocks of 15 minutes each in a day. DSM price includes Ceiling DSM Rate +40% additional DSM charge.

Maximum/Minimum in the month

Table-23: PRICE OF REAL TIME MARKET TRANSACTIONS OF ELECTRICITY (DAY-WISE)						
(`/kWh), FEBRUARY 2021						
Market Segment	Real Time market of IEX			Real Time market of PXIL		
Date	Minimum ACP	Maximum ACP	Weighted Average Price*	Minimum ACP	Maximum ACP	Weighted Average Price*
1-Feb-21	1.76	6.50	3.77	--	--	--
2-Feb-21	2.06	6.50	3.66	--	--	--
3-Feb-21	2.01	6.50	3.46	--	--	--
4-Feb-21	1.59	6.10	3.33	--	--	--
5-Feb-21	1.59	6.50	3.97	--	--	--
6-Feb-21	1.76	7.99	3.67	--	--	--
7-Feb-21	1.77	5.56	2.83	--	--	--
8-Feb-21	1.76	7.00	3.39	--	--	--
9-Feb-21	1.88	6.86	3.48	--	--	--
10-Feb-21	2.08	8.00	3.42	--	--	--
11-Feb-21	2.01	7.00	3.26	--	--	--
12-Feb-21	1.58	7.60	3.09	--	--	--
13-Feb-21	2.16	6.00	3.19	--	--	--
14-Feb-21	2.16	4.50	2.90	--	--	--
15-Feb-21	1.92	7.50	3.16	--	--	--
16-Feb-21	2.00	6.00	2.98	--	--	--
17-Feb-21	2.11	5.30	2.98	--	--	--
18-Feb-21	2.16	3.95	3.09	--	--	--
19-Feb-21	2.00	6.00	3.42	--	--	--
20-Feb-21	2.21	6.00	3.22	--	--	--
21-Feb-21	2.28	9.00	2.72	--	--	--
22-Feb-21	2.25	6.00	3.47	--	--	--
23-Feb-21	2.36	6.11	3.77	--	--	--
24-Feb-21	2.42	7.25	4.07	--	--	--
25-Feb-21	2.51	9.00	4.69	--	--	--
26-Feb-21	2.40	8.96	4.73	--	--	--
27-Feb-21	2.78	7.87	3.81	--	--	--
28-Feb-21	2.65	6.10	3.26	--	--	--
	1.58[#]	9.00[#]	3.50	--	--	--

Source: IEX and PXIL

* Weighted average price computed based on Area Clearing Volume (ACV) and Area Clearing Price (ACP) for each hour of the day. Here, ACV and ACP represent the scheduled volume and weighted average price of all the bid areas of power exchanges.

Maximum/Minimum in the month

Table-24: VOLUME OF SHORT-TERM TRANSACTIONS OF ELECTRICITY (REGIONAL ENTITY*-WISE) (MUs), FEBRUARY 2021

Name of the Entity	Through Bilateral			Through Power Exchange (DAM + RTM)			Through DSM with Regional Grid			Total Net***
	Sale	Purchase	Net**	Sale	Purchase	Net**	Import (Over Draw)	Export (Under Draw)	Net**	
PUNJAB	742.18	354.05	-388.13	11.25	134.13	122.88	19.94	48.36	-28.42	-293.66
HARYANA	134.16	151.43	17.27	44.75	174.83	130.09	44.39	21.29	23.10	170.46
RAJASTHAN	15.88	480.58	464.70	149.32	408.50	259.18	86.93	44.89	42.04	765.92
DELHI	298.07	40.47	-257.60	202.39	126.06	-76.33	9.29	31.54	-22.24	-356.18
U P	339.46	113.52	-225.94	1009.55	172.40	-837.15	58.42	68.31	-9.89	-1072.97
UTTARAKHAND	1.39	228.10	226.71	0.00	78.20	78.20	24.81	13.70	11.11	316.02
HIMACHAL P	5.24	451.57	446.32	42.26	68.42	26.16	17.12	18.53	-1.41	471.08
J & K	29.94	0.00	-29.94	2.21	640.64	638.43	25.42	21.99	3.43	611.91
CHANDIGARH	0.00	0.00	0.00	5.84	3.29	-2.55	4.38	2.41	1.97	-0.58
MP	26.41	712.16	685.75	233.05	75.65	-157.40	34.69	72.14	-37.45	490.90
MAHARASHTRA	11.44	143.80	132.35	108.73	247.42	138.68	40.08	71.54	-31.46	239.57
GUJARAT	324.03	13.29	-310.74	133.59	1363.24	1229.65	55.66	60.55	-4.88	914.02
CHHATTISGARH	101.28	23.18	-78.10	42.64	114.73	72.08	40.48	15.03	25.45	19.44
GOA	0.00	23.96	23.96	23.96	12.05	-11.91	4.83	6.73	-1.89	10.15
DAMAN AND DIU	0.00	0.94	0.94	0.00	23.75	23.75	7.17	0.71	6.46	31.14
DADRA & NAGAR HA	0.00	9.44	9.44	0.00	109.61	109.61	7.62	2.58	5.03	124.09
ANDHRA P	7.68	49.16	41.48	18.57	524.65	506.07	37.01	41.77	-4.76	542.79
KARNATAKA	85.33	7.69	-77.63	188.04	49.39	-138.65	29.45	76.88	-47.43	-263.72
KERALA	0.00	0.00	0.00	34.91	27.52	-7.38	19.46	21.66	-2.20	-9.58
TAMIL NADU	2.24	685.55	683.31	14.37	463.14	448.77	42.37	59.64	-17.28	1114.80
PONDICHERRY	0.00	0.00	0.00	0.00	0.00	0.00	2.29	6.50	-4.22	-4.22
TELANGANA	22.18	566.51	544.33	46.67	1157.44	1110.77	42.01	42.85	-0.84	1654.26
WEST BENGAL	8.30	226.61	218.30	597.55	18.29	-579.26	27.13	27.46	-0.34	-361.29
ODISHA	13.83	79.55	65.73	571.05	42.97	-528.08	19.28	35.36	-16.08	-478.43
BIHAR	0.59	82.86	82.27	213.51	55.05	-158.46	49.40	28.93	20.47	-55.72
JHARKHAND	0.00	123.48	123.48	15.50	32.04	16.55	15.77	12.51	3.26	143.29
SIKKIM	7.71	7.27	-0.43	5.99	0.11	-5.88	1.86	2.89	-1.03	-7.34
DVC	246.24	14.02	-232.22	73.70	0.12	-73.58	21.92	25.78	-3.86	-309.67
ARUNACHAL P	0.00	10.08	10.08	3.70	2.20	-1.51	3.31	4.30	-1.00	7.57
ASSAM	0.00	56.11	56.11	97.60	45.55	-52.05	11.49	6.38	5.12	9.18
MANIPUR	0.00	33.60	33.60	17.26	0.87	-16.39	2.03	3.03	-1.00	16.21
MEGHALAYA	3.27	47.45	44.18	0.00	7.77	7.77	5.94	1.67	4.27	56.22
MIZORAM	0.00	0.00	0.00	3.12	0.00	-3.12	2.49	1.78	0.71	-2.41
NAGALAND	0.00	6.59	6.59	0.19	0.00	-0.19	0.85	1.77	-0.92	5.49
TRIPURA	0.00	0.00	0.00	58.27	0.02	-58.26	1.16	11.33	-10.17	-68.42
NTPC STNS-NR	0.00	0.00	0.00	3.61	0.00	-3.61	65.08	32.94	32.14	28.53
NHPC STNS	0.00	0.00	0.00	0.00	0.00	0.00	10.34	72.98	-62.64	-62.64
NFF	0.00	0.00	0.00	0.00	0.00	0.00	0.75	0.78	-0.03	-0.03
RAIL	0.00	0.00	0.00	0.00	0.00	0.00	6.57	2.50	4.07	4.07
NEP	0.00	40.36	40.36	0.00	0.00	0.00	6.71	0.51	6.20	46.56
NAPP	0.00	0.00	0.00	0.00	0.00	0.00	5.03	6.04	-1.01	-1.01
RAP B	0.00	0.00	0.00	0.00	0.00	0.00	5.63	1.53	4.10	4.10
NJPC	0.00	0.00	0.00	0.00	0.00	0.00	1.77	5.37	-3.60	-3.60
TEHRI	0.00	0.00	0.00	0.00	0.00	0.00	2.12	2.34	-0.22	-0.22
BBMB	0.00	0.00	0.00	0.00	0.00	0.00	4.50	9.52	-5.02	-5.02
RAP C	0.00	0.00	0.00	0.00	0.00	0.00	0.20	1.25	-1.05	-1.05
AD HYDRO	0.00	0.00	0.00	9.16	0.00	-9.16	0.29	0.42	-0.13	-9.30
IGSTPS	0.00	0.00	0.00	0.00	0.00	0.00	5.57	2.57	3.00	3.00
KOTESHWAR	0.00	0.00	0.00	0.00	0.00	0.00	0.72	1.68	-0.96	-0.96
KARCHAM WANGTO	0.00	0.00	0.00	10.74	0.00	-10.74	2.74	2.84	-0.10	-10.85
SHREE CEMENT	0.00	0.00	0.00	0.00	0.00	0.00	0.29	0.40	-0.10	-0.10
LANCO BUDHIL	0.00	0.00	0.00	0.46	0.00	-0.46	0.14	0.22	-0.08	-0.53
RAMPUR HEP	0.00	0.00	0.00	0.00	0.00	0.00	0.25	3.73	-3.47	-3.47
SAINJ HEP	0.00	0.00	0.00	8.01	0.00	-8.01	0.11	0.34	-0.23	-8.24
RENEW_SLR	0.00	0.00	0.00	0.00	0.00	0.00	0.39	0.29	0.10	0.10
AZURE_SLR	0.00	0.00	0.00	0.00	0.00	0.00	1.75	1.10	0.64	0.64
SB_SLR	0.00	0.00	0.00	0.00	0.00	0.00	0.91	2.19	-1.28	-1.28
ACME_SLR	0.00	0.00	0.00	0.00	0.00	0.00	0.63	2.93	-2.31	-2.31
AZURE34_SLR	0.00	0.00	0.00	0.00	0.00	0.00	1.04	1.23	-0.19	-0.19
TATA_SLR	0.00	0.00	0.00	0.00	0.00	0.00	0.54	1.46	-0.92	-0.92

RENEW_SLR_BKN	0.00	0.00	0.00	0.00	0.00	0.00	1.28	2.20	-0.93	-0.93
CLEAN_SLR	0.00	0.00	0.00	0.00	0.00	0.00	1.08	5.67	-4.59	-4.59
ARERJL_SLR	0.00	0.00	0.00	0.00	0.00	0.00	1.55	0.71	0.83	0.83
KSMPL_SLR	0.00	0.00	0.00	0.00	0.00	0.00	0.24	0.45	-0.21	-0.21
ASEJTL_SLR	0.00	0.00	0.00	0.00	0.00	0.00	0.39	0.32	0.07	0.07
SINGOLI BHATWARI	0.00	0.00	0.00	9.77	0.00	-9.77	2.38	2.08	0.31	-9.46
AZURE43_SLR	0.00	0.00	0.00	0.00	0.00	0.00	0.32	0.32	0.00	0.00
NTPC STNS-WR	0.00	0.00	0.00	23.62	0.00	-23.62	52.91	204.42	-151.51	-175.13
BHADRAVATHI HVDC	0.00	0.00	0.00	0.00	0.00	0.00	0.01	0.46	-0.45	-0.45
VINDHYACHAL HVDC	0.00	0.00	0.00	0.00	0.00	0.00	0.19	0.25	-0.06	-0.06
JINDAL POWER	226.28	0.00	-226.28	115.27	0.05	-115.22	2.01	7.83	-5.82	-347.31
LANKO_AMK	9.07	0.00	-9.07	0.00	0.00	0.00	0.11	3.71	-3.60	-12.67
NSPCL	0.00	0.00	0.00	0.00	0.00	0.00	2.58	1.50	1.08	1.08
ACBIL	0.67	0.00	-0.67	17.98	0.00	-17.98	1.47	4.85	-3.38	-22.04
BALCO	66.70	0.00	-66.70	21.58	0.00	-21.58	13.14	1.34	11.80	-76.48
RGPPL	0.00	0.00	0.00	1.88	0.00	-1.88	9.92	1.45	8.46	6.58
CGPL	0.00	0.00	0.00	0.13	0.00	-0.13	23.67	2.75	20.92	20.79
DCPP	0.00	0.00	0.00	0.00	0.00	0.00	0.33	0.02	0.32	0.32
EMCO	0.00	0.00	0.00	112.59	0.00	-112.59	5.82	5.70	0.12	-112.48
VANDANA VIDYUT	0.00	0.00	0.00	0.00	0.00	0.00	0.03	0.00	0.03	0.03
KSK MAHANADI	34.61	0.00	-34.61	5.42	0.00	-5.42	1.34	1.94	-0.60	-40.63
ESSAR POWER	123.82	0.00	-123.82	54.32	0.00	-54.32	0.86	8.59	-7.73	-185.87
JINDAL STAGE-II	134.89	0.00	-134.89	114.91	0.00	-114.91	2.31	13.27	-10.95	-260.76
DB POWER	297.20	0.00	-297.20	92.30	0.00	-92.30	6.06	2.78	3.28	-386.22
DHARIWAL POWER	0.00	0.00	0.00	0.91	0.00	-0.91	0.37	3.95	-3.58	-4.49
JAYPEE NIGRIE	79.56	0.00	-79.56	178.67	0.00	-178.67	1.51	4.23	-2.72	-260.95
DGEN MEGA POWER	0.00	0.00	0.00	0.00	0.00	0.00	1.02	0.00	1.02	1.02
MB POWER	100.09	0.00	-100.09	106.80	0.00	-106.80	6.59	8.10	-1.51	-208.40
MARUTI COAL	0.00	0.00	0.00	34.23	0.00	-34.23	0.00	0.00	0.00	-34.23
SPECTRUM	0.00	0.00	0.00	20.47	0.00	-20.47	0.00	0.00	0.00	-20.47
JHABUA POWER_MH	13.44	0.00	-13.44	31.11	0.00	-31.11	10.83	7.43	3.39	-41.16
SASAN UMPP	0.00	0.00	0.00	0.16	0.00	-0.16	2.02	55.68	-53.67	-53.83
TRN ENERGY	6.72	0.00	-6.72	0.00	0.00	0.00	0.05	1.57	-1.53	-8.25
RKM POWER	234.63	0.00	-234.63	82.01	0.00	-82.01	8.92	2.63	6.29	-310.35
SKS POWER	98.62	0.00	-98.62	30.52	0.00	-30.52	0.49	1.31	-0.82	-129.96
BARC	0.00	0.00	0.00	0.00	0.00	0.00	0.21	0.49	-0.28	-0.28
KAPP 3&4	0.00	0.00	0.00	0.00	0.00	0.00	3.10	76.93	-73.83	-73.83
HVDC CHAMPA	0.00	0.00	0.00	0.00	0.00	0.00	1.47	0.00	1.47	1.47
MAHINDRA_RUMS	0.00	0.00	0.00	0.00	0.00	0.00	4.39	0.98	3.41	3.41
ARINSUM_RUMS	0.00	0.00	0.00	0.00	0.00	0.00	2.75	1.23	1.52	1.52
OSTRO	0.00	0.00	0.00	0.00	0.00	0.00	3.38	7.85	-4.48	-4.48
ACME_RUMS	0.00	0.00	0.00	0.00	0.00	0.00	1.69	1.55	0.15	0.15
RENEW_BHACHAU	0.00	0.00	0.00	0.00	0.00	0.00	2.79	8.09	-5.30	-5.30
GIWEL_BHUJ	0.00	0.00	0.00	0.00	0.00	0.00	6.37	14.35	-7.98	-7.98
INOX_BHUJ	0.00	0.00	0.00	0.00	0.00	0.00	3.46	2.38	1.08	1.08
AGEMPL_BHUJ	0.00	0.00	0.00	0.00	0.00	0.00	8.56	1.83	6.73	6.73
REGL	178.52	0.00	-178.52	93.68	5.23	-88.45	13.23	2.02	11.21	-255.77
RPREL	228.87	0.00	-228.87	80.86	2.04	-78.82	13.82	4.60	9.22	-298.48
AMPS Hazira	0.00	64.99	64.99	0.00	38.27	38.27	23.35	16.68	6.664	109.926
HVDC RAIGARH	0.00	0.00	0.00	0.00	0.00	0.00	0.02	0.16	-0.15	-0.15
RGPPL_IR	0.00	0.00	0.00	0.83	0.00	-0.83	0.00	0.00	0.00	-0.83
RGPPL_Others	0.00	0.00	0.00	0.24	0.00	-0.24	0.00	0.00	0.00	-0.24
ALFANAR_BHUJ	0.00	0.00	0.00	0.00	0.00	0.00	3.97	7.04	-3.07	-3.07
RENEW_BHUJ	0.00	0.00	0.00	0.00	0.00	0.00	2.67	5.59	-2.92	-2.92
NTPC STNS-SR	0.00	0.00	0.00	21.52	0.00	-21.52	30.00	32.45	-2.46	-23.98
LANKO KONDAPALL	0.00	0.00	0.00	0.00	0.00	0.00	0.47	0.00	0.47	0.47
SIMHAPURI	0.00	0.00	0.00	0.00	0.00	0.00	0.31	0.01	0.31	0.31
MEENAKSHI	26.50	0.00	-26.50	14.25	0.04	-14.21	1.74	0.71	1.03	-39.68
COASTGEN	0.00	0.00	0.00	0.00	0.00	0.00	3.94	1.49	2.45	2.45
THERMAL POWERTE	0.00	0.00	0.00	0.00	0.00	0.00	5.40	2.13	3.27	3.27
IL&FS	33.48	0.00	-33.48	6.38	0.00	-6.38	2.88	0.97	1.92	-37.94
NLC	0.00	0.00	0.00	74.69	0.00	-74.69	37.29	33.28	4.00	-70.68
SEMBCORP	413.23	0.00	-413.23	246.38	0.00	-246.38	2.46	3.74	-1.29	-660.90
NETCL VALLUR	0.00	0.00	0.00	0.00	0.00	0.00	11.47	3.63	7.84	7.84
NTPL	0.00	0.00	0.00	25.36	0.00	-25.36	2.89	1.30	1.58	-23.78
AHSP_ANTP	0.00	0.00	0.00	0.00	0.00	0.00	0.48	0.58	-0.10	-0.10
AKSP_ANTP	0.00	0.00	0.00	0.00	0.00	0.00	0.31	0.89	-0.58	-0.58
ABSP_ANTP	0.00	0.00	0.00	0.00	0.00	0.00	0.30	0.90	-0.60	-0.60

AZURE_ANTP	0.00	0.00	0.00	0.00	0.00	0.00	0.30	0.75	-0.45	-0.45
TATA_ANTP	0.00	0.00	0.00	0.00	0.00	0.00	0.47	2.01	-1.54	-1.54
FRV_ANTP	0.00	0.00	0.00	0.00	0.00	0.00	0.45	0.50	-0.05	-0.05
NTPC_ANTP	0.00	0.00	0.00	0.00	0.00	0.00	2.09	3.61	-1.52	-1.52
GIWEL_TCN	0.00	0.00	0.00	0.00	0.00	0.00	7.14	5.04	2.10	2.10
MYTRAH_TCN	0.00	0.00	0.00	0.00	0.00	0.00	7.23	2.67	4.57	4.57
FRV_NPK	0.00	0.00	0.00	0.00	0.00	0.00	0.31	1.23	-0.92	-0.92
ORANGE_TCN	0.00	0.00	0.00	0.00	0.00	0.00	6.07	3.92	2.15	2.15
BETAM_TCN	0.00	0.00	0.00	0.00	0.00	0.00	4.23	3.06	1.17	1.17
SBG_PVGD	0.00	0.00	0.00	0.00	0.00	0.00	1.79	1.67	0.12	0.12
SBG_NPK	0.00	0.00	0.00	0.00	0.00	0.00	1.63	2.54	-0.91	-0.91
FORTUM1_PVGD	0.00	0.00	0.00	0.00	0.00	0.00	0.84	1.02	-0.18	-0.18
PARAM_PVGD	0.00	0.00	0.00	0.00	0.00	0.00	1.00	2.66	-1.66	-1.66
YARROW_PVGD	0.00	0.00	0.00	0.00	0.00	0.00	0.30	0.92	-0.61	-0.61
TATA_PVGD	0.00	0.00	0.00	0.00	0.00	0.00	2.23	7.23	-5.00	-5.00
RENEW_PVGD	0.00	0.00	0.00	0.00	0.00	0.00	0.29	0.92	-0.63	-0.63
AKS_PVGD	0.00	0.00	0.00	0.00	0.00	0.00	0.35	1.00	-0.65	-0.65
ARS_PVGD	0.00	0.00	0.00	0.00	0.00	0.00	0.21	1.31	-1.10	-1.10
AVAADA1_PVGD	0.00	0.00	0.00	0.00	0.00	0.00	0.57	3.00	-2.42	-2.42
ADY1_PVGD	0.00	0.00	0.00	0.00	0.00	0.00	0.23	1.07	-0.84	-0.84
ADY2_PVGD	0.00	0.00	0.00	0.00	0.00	0.00	0.17	1.25	-1.08	-1.08
ADY13_PVGD	0.00	0.00	0.00	0.00	0.00	0.00	0.19	1.22	-1.03	-1.03
ADY3_PVGD	0.00	0.00	0.00	0.00	0.00	0.00	0.27	1.07	-0.80	-0.80
ADY6_PVGD	0.00	0.00	0.00	0.00	0.00	0.00	0.26	1.19	-0.93	-0.93
ADY10_PVGD	0.00	0.00	0.00	0.00	0.00	0.00	0.19	1.14	-0.94	-0.94
AZURE_PVGD	0.00	0.00	0.00	0.00	0.00	0.00	0.35	2.80	-2.45	-2.45
FORTUM2_PVGD	0.00	0.00	0.00	0.00	0.00	0.00	0.78	5.58	-4.80	-4.80
AVAADA2_PVGD	0.00	0.00	0.00	0.00	0.00	0.00	0.54	3.21	-2.68	-2.68
KREDL_PVGD	0.00	0.00	0.00	0.00	0.00	0.00	0.49	0.61	-0.12	-0.12
AYANA_NPKUNTA	0.00	0.00	0.00	0.00	0.00	0.00	0.49	3.28	-2.79	-2.79
SPRNG_NPKUNTA	0.00	0.00	0.00	0.00	0.00	0.00	1.40	2.43	-1.03	-1.03
NTPC STNS-ER	0.00	0.00	0.00	10.14	0.00	-10.14	54.43	26.88	27.55	17.41
MAITHON POWER LT	0.00	0.00	0.00	0.00	0.00	0.00	3.12	2.09	1.03	1.03
NPGC	0.00	0.00	0.00	0.00	0.00	0.00	2.97	3.38	-0.41	-0.41
ADHUNIK POWER LT	123.48	0.00	-123.48	0.00	0.00	0.00	1.02	6.69	-5.67	-160.31
CHUZACHEN HEP	0.19	0.00	-0.19	31.16	0.00	0.00	0.12	0.06	0.06	-0.23
RANGIT HEP	0.00	0.00	0.00	0.10	0.00	0.00	0.72	0.61	0.11	0.11
GMR KAMALANGA	0.32	0.00	-0.32	0.00	0.00	0.00	2.05	5.05	-3.00	-24.32
JITPL	75.58	0.00	-75.58	21.00	0.00	0.00	1.35	1.93	-0.58	-461.33
TEESTA HEP	0.00	0.00	0.00	385.17	0.00	0.00	0.56	3.62	-3.06	-105.45
DAGACHU	14.78	0.00	-14.78	102.39	0.00	0.00	2.66	0.01	2.65	-16.37
JORETHANG	8.75	0.00	-8.75	4.23	0.00	0.00	1.96	0.27	1.69	-8.24
NEPAL(NVVN)	0.00	171.03	171.03	1.18	0.00	0.00	25.72	0.48	25.25	196.27
BANGLADESH	0.00	26.50	26.50	0.00	0.00	0.00	2.47	2.43	0.04	26.54
HVDC PUS	0.00	0.00	0.00	0.00	0.00	0.00	0.01	0.06	-0.06	-0.06
TEESTA STG3	0.00	0.00	0.00	0.00	0.00	0.00	4.54	1.03	3.51	3.51
DIKCHU HEP	0.29	0.00	-0.29	0.22	0.00	-0.22	0.82	0.75	0.07	-0.43
HVDC ALPD	0.00	0.00	0.00	0.00	0.00	0.00	0.03	0.06	-0.03	-0.03
TASHIDENG HEP	8.23	0.00	-8.23	1.00	0.00	-1.00	1.53	0.26	1.26	-7.97
BRBCL,NABINAGAR	0.00	0.00	0.00	1.28	0.00	-1.28	2.27	2.81	-0.55	-1.83
MTPS II	0.00	0.00	0.00	0.00	0.00	0.00	1.59	3.73	-2.14	-2.14
TALA HEP	0.00	0.00	0.00	0.00	0.00	0.00	39.55	0.06	39.49	39.49
CHUKHA HEP	0.00	0.00	0.00	0.00	0.00	0.00	1.15	16.48	-15.33	-15.33
KURICHU HEP	0.00	0.00	0.00	0.00	0.00	0.00	34.44	0.00	34.44	34.44
MANGDECHU HEP	0.00	0.00	0.00	0.00	0.00	0.00	3.06	2.63	0.44	0.44
NTPC STNS-NER	0.23	0.00	-0.23	21.04	0.00	-21.04	4.58	1.61	2.98	-18.30
NEEPCO STNS	26.67	0.00	-26.67	25.49	0.00	-25.49	1.90	7.39	-5.49	-57.64
RANGANADI HEP	0.00	0.00	0.00	0.00	0.00	0.00	1.29	0.73	0.56	0.56
DOYANG HEP	0.00	0.00	0.00	0.00	0.00	0.00	0.21	0.40	-0.19	-0.19
ONGC PALATANA	53.76	0.00	-53.76	0.87	0.00	-0.87	0.26	0.91	-0.66	-55.29
LOKTAK	0.00	0.00	0.00	0.00	0.00	0.00	0.58	0.53	0.05	0.05
PARE HEP	0.00	0.00	0.00	0.00	0.00	0.00	0.25	0.27	-0.02	-0.02

Source: NLDC

* in case of a state, the entities which are "selling" also include generators connected to state grid and the entities which are "buying" also include open access consumers.

** (-) indicates sale and (+) indicates purchase.

*** Total net includes net of transactions through bilateral, power exchange and DSM